

Datasheet for ABIN6260420
anti-Calreticulin 3 antibody (C-Term)[Go to Product page](#)

1 Image

Overview

Quantity:	100 µL
Target:	Calreticulin 3 (CALR3)
Binding Specificity:	C-Term
Reactivity:	Human, Mouse, Rat
Host:	Rabbit
Clonality:	Polyclonal
Conjugate:	This Calreticulin 3 antibody is un-conjugated
Application:	Western Blotting (WB), ELISA, Immunohistochemistry (IHC), Immunofluorescence (IF), Immunocytochemistry (ICC)

Product Details

Immunogen:	A synthesized peptide derived from human CALR3, corresponding to a region within C-terminal amino acids.
Isotype:	IgG
Specificity:	CALR3 Antibody detects endogenous levels of total CALR3.
Predicted Reactivity:	Pig,Bovine,Sheep,Rabbit,Dog
Purification:	The antiserum was purified by peptide affinity chromatography using SulfoLink™ Coupling Resin (Thermo Fisher Scientific).

Target Details

Target:	Calreticulin 3 (CALR3)
---------	------------------------

Target Details

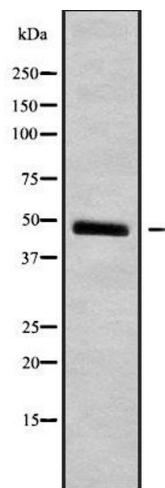
Alternative Name:	CALR3 (CALR3 Products)
Background:	<p>Description: During spermatogenesis, may act as a lectin-independent chaperone for specific client proteins such as ADAM3. Required for sperm fertility (By similarity). CALR3 capacity for calcium-binding may be absent or much lower than that of CALR.</p> <p>Gene: CALR3</p>
Molecular Weight:	45 kDa
Gene ID:	125972
UniProt:	Q96L12
Pathways:	Activation of Innate immune Response

Application Details

Application Notes:	WB 1:1000-3000, IF/ICC 1:100-1:500, IHC 1:50-1:200, ELISA(peptide) 1:20000-1:40000
Restrictions:	For Research Use only

Handling

Format:	Liquid
Concentration:	1 mg/mL
Buffer:	Rabbit IgG in phosphate buffered saline , pH 7.4, 150 mM NaCl, 0.02 % sodium azide and 50 % glycerol.
Preservative:	Sodium azide
Precaution of Use:	This product contains Sodium azide: a POISONOUS AND HAZARDOUS SUBSTANCE which should be handled by trained staff only.
Storage:	-20 °C
Storage Comment:	Store at -20 °C. Stable for 12 months from date of receipt.
Expiry Date:	12 months



Western Blotting

Image 1. Western blot analysis of CALR3 using NIH-3T3 whole cell lysates