



[Go to Product page](#)

Datasheet for ABIN6260422

## anti-DREAM antibody (Internal Region)

### 4 Images

#### Overview

Quantity:	100 µL
Target:	DREAM (KCNIP3)
Binding Specificity:	Internal Region
Reactivity:	Human, Mouse, Rat
Host:	Rabbit
Clonality:	Polyclonal
Conjugate:	This DREAM antibody is un-conjugated
Application:	Western Blotting (WB), ELISA, Immunohistochemistry (IHC), Immunofluorescence (IF), Immunocytochemistry (ICC)

#### Product Details

Immunogen:	A synthesized peptide derived from human Calsenilin/KCNIP3, corresponding to a region within the internal amino acids.
Isotype:	IgG
Specificity:	Calsenilin/KCNIP3 Antibody detects endogenous levels of total Calsenilin/KCNIP3.
Predicted Reactivity:	Pig,Bovine,Horse,Sheep,Rabbit,Dog
Purification:	The antiserum was purified by peptide affinity chromatography using SulfoLink™ Coupling Resin (Thermo Fisher Scientific).

#### Target Details

Target:	DREAM (KCNIP3)
---------	----------------

## Target Details

---

Alternative Name:	KCNIP3 ( <a href="#">KCNIP3 Products</a> )
Background:	Description: Calcium-dependent transcriptional repressor that binds to the DRE element of genes including PDYN and FOS. Affinity for DNA is reduced upon binding to calcium and enhanced by binding to magnesium. Seems to be involved in nociception (By similarity). Gene: KCNIP3
Molecular Weight:	29 kDa
Gene ID:	30818
UniProt:	<a href="#">Q9Y2W7</a>

## Application Details

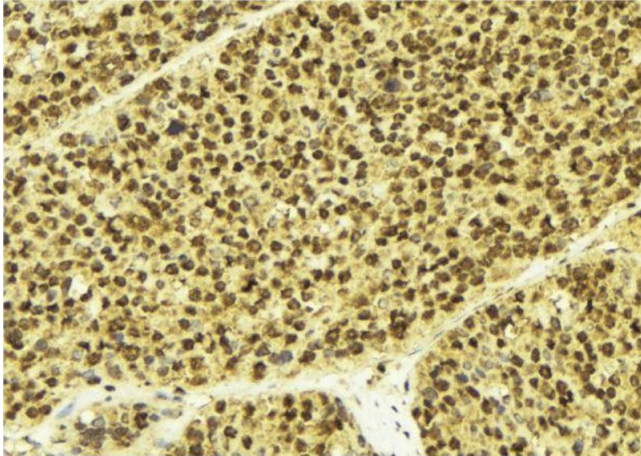
---

Application Notes:	WB 1:500-1:2000, IHC 1:50-1:200, IF/ICC 1:100-1:500, ELISA(peptide) 1:20000-1:40000
Restrictions:	For Research Use only

## Handling

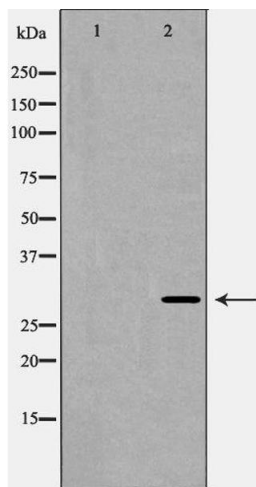
---

Format:	Liquid
Concentration:	1 mg/mL
Buffer:	Rabbit IgG in phosphate buffered saline , pH 7.4, 150 mM NaCl, 0.02 % sodium azide and 50 % glycerol.
Preservative:	Sodium azide
Precaution of Use:	This product contains Sodium azide: a POISONOUS AND HAZARDOUS SUBSTANCE which should be handled by trained staff only.
Storage:	-20 °C
Storage Comment:	Store at -20 °C. Stable for 12 months from date of receipt.
Expiry Date:	12 months



### Immunohistochemistry

**Image 1.** ABIN6268873 at 1/100 staining Human breast cancer tissue by IHC-P. The sample was formaldehyde fixed and a heat mediated antigen retrieval step in citrate buffer was performed. The sample was then blocked and incubated with the antibody for 1.5 hours at 22°C. An HRP conjugated goat anti-rabbit antibody was used as the secondary.



### Western Blotting

**Image 2.** Western blot analysis of Calsenilin/KCNIP3 expression in A431 cells. The lane on the left is treated with the antigen-specific peptide.



### Immunofluorescence (fixed cells)

**Image 3.** ABIN6268873 staining SHSY5Y? cells by IF/ICC. The sample were fixed with PFA and permeabilized in 0.1% Triton X-100, then blocked in 10% serum for 45 minutes at 25°C. The primary antibody was diluted at 1/200 and incubated with the sample for 1 hour at 37°C. An Alexa Fluor 594 conjugated goat anti-rabbit IgG (H+L) antibody (Cat.# S0006), diluted at 1/600, was used as secondary antibody

Please check the [product details page](#) for more images. Overall 4 images are available for ABIN6260422.