



[Go to Product page](#)

Datasheet for ABIN6260435

## anti-CaMK2 beta/gamma antibody

### 3 Images

#### Overview

|              |  |
|--------------|--|
| Quantity:    | 100 µL   |
| Target:      | CaMK2 beta/gamma   |
| Reactivity:  | Human, Mouse   |
| Host:        | Rabbit   |
| Clonality:   | Polyclonal   |
| Conjugate:   | This CaMK2 beta/gamma antibody is un-conjugated                                  |
| Application: | Western Blotting (WB), ELISA, Immunofluorescence (IF), Immunocytochemistry (ICC) |

#### Product Details

|                   |   |
|-------------------|---|
| Immunogen:        | A synthesized peptide derived from human CaMKIIbeta/gamma   |
| Isotype:          | IgG   |
| Specificity:      | CaMKIIbeta/gamma Antibody detects endogenous levels of total CaMKIIbeta/gamma   |
| Cross-Reactivity: | Human, Mouse (Murine)   |
| Purification:     | The antiserum was purified by peptide affinity chromatography using SulfoLink™ Coupling Resin (Thermo Fisher Scientific). |

#### Target Details

|                   |  |
|-------------------|--|
| Target:           | CaMK2 beta/gamma   |
| Alternative Name: | CaMKIIbeta/gamma ( <a href="#">CaMK2 beta/gamma Products</a> )                             |
| Background:       | Description: Calcium/calmodulin-dependent protein kinase that functions autonomously after |

## Target Details

---

Ca<sup>2+</sup>/calmodulin-binding and autophosphorylation, and is involved in sarcoplasmic reticulum Ca<sup>2+</sup> transport in skeletal muscle and may function in dendritic spine and synapse formation and neuronal plasticity. In slow-twitch muscles, is involved in regulation of sarcoplasmic reticulum (SR) Ca<sup>2+</sup> transport and in fast-twitch muscle participates in the control of Ca<sup>2+</sup> release from the SR through phosphorylation of the ryanodine receptor-coupling factor triadin. In neurons, may participate in the promotion of dendritic spine and synapse formation and maintenance of synaptic plasticity which enables long-term potentiation (LTP) and hippocampus-dependent learning.

Gene: CAMK2G

---

Molecular Weight: 62kDa

---

Gene ID: 818

---

UniProt: [Q13555](#), [Q13554](#)

## Application Details

---

Application Notes: WB 1:1000, IF/ICC 1:100-1:500

---

Restrictions: For Research Use only

## Handling

---

Format: Liquid

---

Concentration: 1 mg/mL

---

Buffer: Rabbit IgG in phosphate buffered saline , pH 7.4, 150 mM NaCl, 0.02 % sodium azide and 50 % glycerol.

---

Preservative: Sodium azide

---

Precaution of Use: This product contains Sodium azide: a POISONOUS AND HAZARDOUS SUBSTANCE which should be handled by trained staff only.

---

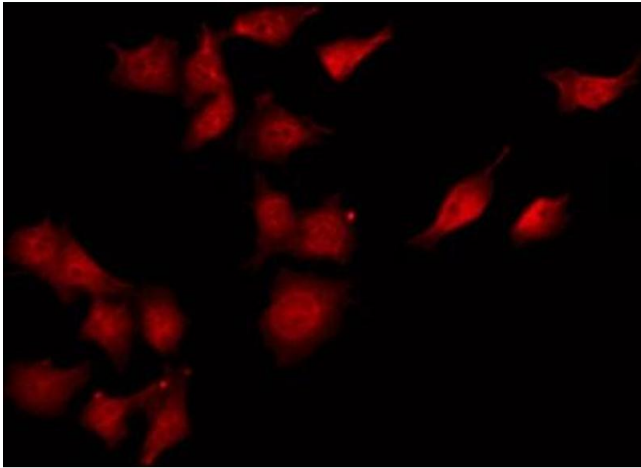
Storage: -20 °C

---

Storage Comment: Store at -20 °C. Stable for 12 months from date of receipt

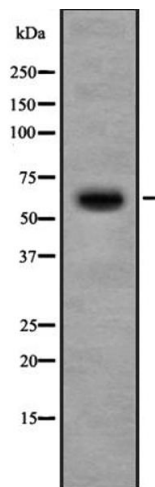
---

Expiry Date: 12 months



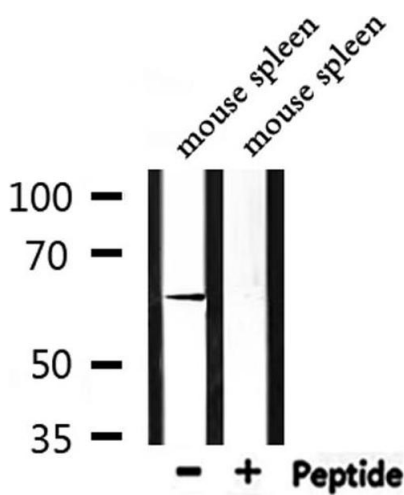
### Immunofluorescence (fixed cells)

**Image 1.** ABIN6272263 staining COLO205 by IF/ICC. The sample were fixed with PFA and permeabilized in 0.1% Triton X-100, then blocked in 10% serum for 45 minutes at 25°C. The primary antibody was diluted at 1/200 and incubated with the sample for 1 hour at 37°C. An Alexa Fluor 594 conjugated goat anti-rabbit IgG (H+L) Ab, diluted at 1/600, was used as the secondary antibody.



### Western Blotting

**Image 2.** Western blot analysis of CaMKIIbeta/gamma using COLO205 whole cell lysates



### Western Blotting

**Image 3.** Western blot analysis of extracts from mouse spleen, using CaMKIIbeta/gamma Antibody.