

Datasheet for ABIN6260466
anti-CSNK1G1 antibody[Go to Product page](#)

2 Images

Overview

Quantity:	100 µL
Target:	CSNK1G1
Reactivity:	Human, Mouse, Rat, Monkey
Host:	Rabbit
Clonality:	Polyclonal
Conjugate:	This CSNK1G1 antibody is un-conjugated
Application:	Western Blotting (WB), ELISA, Immunofluorescence (IF), Immunocytochemistry (ICC)

Product Details

Immunogen:	A synthesized peptide derived from human Casein Kinase Igama1
Isotype:	IgG
Specificity:	Casein Kinase Igama1 Antibody detects endogenous levels of total Casein Kinase Igama1
Cross-Reactivity:	Human, Monkey, Mouse (Murine), Rat (Rattus)
Purification:	The antiserum was purified by peptide affinity chromatography using SulfoLink™ Coupling Resin (Thermo Fisher Scientific).

Target Details

Target:	CSNK1G1
Alternative Name:	Casein Kinase Igama1 (CSNK1G1 Products)
Background:	Description: Serine/threonine-protein kinase. Casein kinases are operationally defined by their

Target Details

preferential utilization of acidic proteins such as caseins as substrates. It can phosphorylate a large number of proteins. Participates in Wnt signaling. Regulates fast synaptic transmission mediated by glutamate (By similarity). Phosphorylates CLSPN.
Gene: CSNK1G1

Molecular Weight: 49kDa

Gene ID: 53944

UniProt: [Q9HCP0](#)

Pathways: [Hedgehog Signaling](#)

Application Details

Application Notes: WB 1:1000, IF/ICC 1:100-1:500

Restrictions: For Research Use only

Handling

Format: Liquid

Concentration: 1 mg/mL

Buffer: Rabbit IgG in phosphate buffered saline , pH 7.4, 150 mM NaCl, 0.02 % sodium azide and 50 % glycerol.

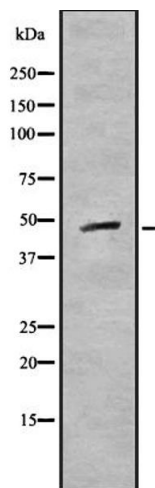
Preservative: Sodium azide

Precaution of Use: This product contains Sodium azide: a POISONOUS AND HAZARDOUS SUBSTANCE which should be handled by trained staff only.

Storage: -20 °C

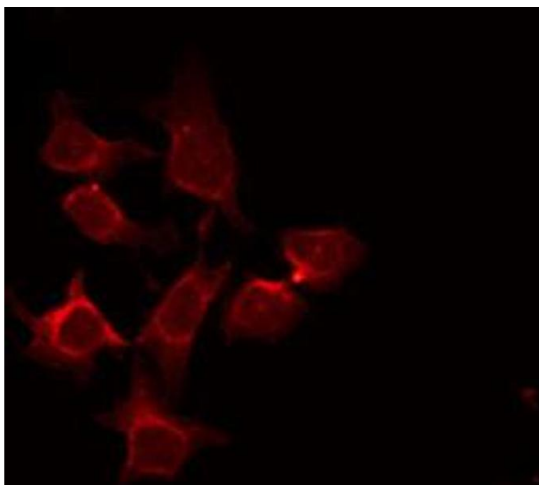
Storage Comment: Store at -20 °C. Stable for 12 months from date of receipt

Expiry Date: 12 months



Western Blotting

Image 1. Western blot analysis of Casein Kinase Igamma1 using COS7 whole cell lysates



Immunofluorescence (fixed cells)

Image 2. ABIN6272266 staining COS7 by IF/ICC. The sample were fixed with PFA and permeabilized in 0.1% Triton X-100, then blocked in 10% serum for 45 minutes at 25°C. The primary antibody was diluted at 1/200 and incubated with the sample for 1 hour at 37°C. An Alexa Fluor 594 conjugated goat anti-rabbit IgG (H+L) Ab, diluted at 1/600, was used as the secondary antibody.