

Datasheet for ABIN6260491

anti-Catalase antibody

5 Images

[Go to Product page](#)

Overview

Quantity:	100 µL
Target:	Catalase (CAT)
Reactivity:	Human, Mouse, Rat
Host:	Rabbit
Clonality:	Polyclonal
Conjugate:	This Catalase antibody is un-conjugated
Application:	Western Blotting (WB), Immunohistochemistry (IHC), ELISA, Immunofluorescence (IF), Immunocytochemistry (ICC)

Product Details

Immunogen:	A synthesized peptide derived from human Catalase
Isotype:	IgG
Specificity:	Catalase Antibody detects endogenous levels of total Catalase
Cross-Reactivity:	Human, Mouse (Murine), Rat (Rattus)
Purification:	The antiserum was purified by peptide affinity chromatography using SulfoLink™ Coupling Resin (Thermo Fisher Scientific).

Target Details

Target:	Catalase (CAT)
Alternative Name:	Catalase (CAT Products)

Target Details

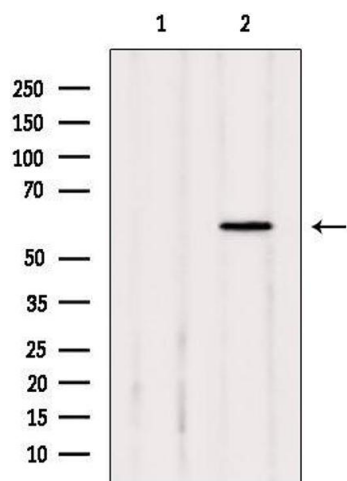
Background:	Description: Occurs in almost all aerobically respiring organisms and serves to protect cells from the toxic effects of hydrogen peroxide. Promotes growth of cells including T-cells, B-cells, myeloid leukemia cells, melanoma cells, mastocytoma cells and normal and transformed fibroblast cells. Gene: CAT
Molecular Weight:	60 kDa
Gene ID:	847
UniProt:	P04040
Pathways:	Cellular Glucan Metabolic Process , Cell RedoxHomeostasis , Photoperiodism

Application Details

Application Notes:	WB 1:1000-3000 IHC 1:200, IF/ICC 1:100-1:500
Restrictions:	For Research Use only

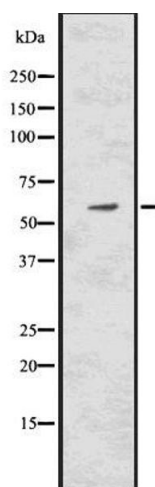
Handling

Format:	Liquid
Concentration:	1 mg/mL
Buffer:	Rabbit IgG in phosphate buffered saline , pH 7.4, 150 mM NaCl, 0.02 % sodium azide and 50 % glycerol.
Preservative:	Sodium azide
Precaution of Use:	This product contains Sodium azide: a POISONOUS AND HAZARDOUS SUBSTANCE which should be handled by trained staff only.
Storage:	-20 °C
Storage Comment:	Store at -20 °C.Stable for 12 months from date of receipt
Expiry Date:	12 months



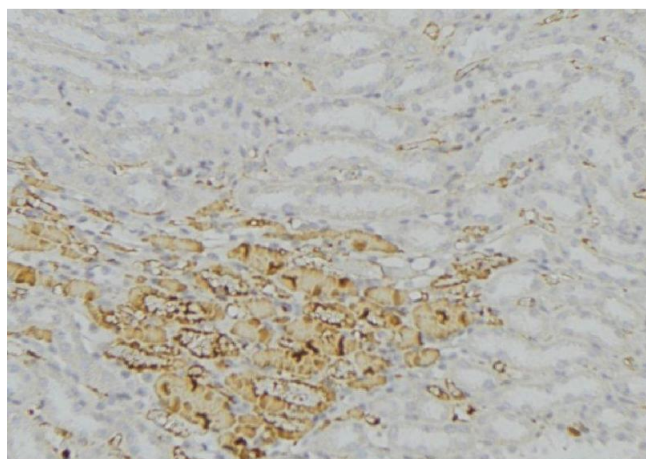
Western Blotting

Image 1. Western blot analysis of extracts from mouse kidney, using Catalase Antibody. Lane 1 was treated with the antigen-specific peptide.



Western Blotting

Image 2. Western blot analysis of Catalase using HepG2 whole cell lysates



Immunohistochemistry

Image 3. ABIN6277758 at 1/100 staining Mouse kidney tissue by IHC-P. The sample was formaldehyde fixed and a heat mediated antigen retrieval step in citrate buffer was performed. The sample was then blocked and incubated with the antibody for 1.5 hours at 22°C. An HRP conjugated goat anti-rabbit antibody was used as the secondary

Please check the [product details page](#) for more images. Overall 5 images are available for ABIN6260491.