

Datasheet for ABIN6260507
anti-CATSPERB antibody (C-Term)[Go to Product page](#)

1 Image

Overview

Quantity:	100 µL
Target:	CATSPERB
Binding Specificity:	C-Term
Reactivity:	Human
Host:	Rabbit
Clonality:	Polyclonal
Conjugate:	This CATSPERB antibody is un-conjugated
Application:	Western Blotting (WB), ELISA

Product Details

Immunogen:	A synthesized peptide derived from human CATSPERB, corresponding to a region within C-terminal amino acids.
Isotype:	IgG
Specificity:	CATSPERB Antibody detects endogenous levels of total CATSPERB.
Purification:	The antiserum was purified by peptide affinity chromatography using SulfoLink™ Coupling Resin (Thermo Fisher Scientific).

Target Details

Target:	CATSPERB
Alternative Name:	CATSPERB (CATSPERB Products)

Target Details

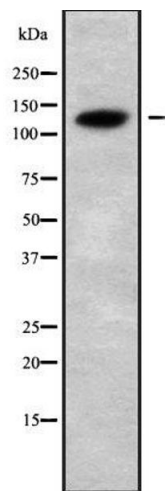
Background:	Description: Probably involved in sperm cell hyperactivation via its association with CATSPER1. Sperm cell hyperactivation is needed for sperm motility which is essential late in the preparation of sperm for fertilization. Gene: CATSPERB
Molecular Weight:	127kDa
Gene ID:	79820
UniProt:	Q9H7T0

Application Details

Application Notes:	WB 1:1000-3000, ELISA(peptide) 1:20000-1:40000
Restrictions:	For Research Use only

Handling

Format:	Liquid
Concentration:	1 mg/mL
Buffer:	Rabbit IgG in phosphate buffered saline , pH 7.4, 150 mM NaCl, 0.02 % sodium azide and 50 % glycerol.
Preservative:	Sodium azide
Precaution of Use:	This product contains Sodium azide: a POISONOUS AND HAZARDOUS SUBSTANCE which should be handled by trained staff only.
Storage:	-20 °C
Storage Comment:	Store at -20 °C. Stable for 12 months from date of receipt.
Expiry Date:	12 months



Western Blotting

Image 1. Western blot analysis of CATSPERB using COLO205 whole cell lysates