



[Go to Product page](#)

Datasheet for ABIN626051
anti-GALT antibody (AA 1-380)

2 Images

Overview

Quantity:	50 µg
Target:	GALT
Binding Specificity:	AA 1-380
Reactivity:	Human
Host:	Mouse
Clonality:	Monoclonal
Application:	Western Blotting (WB), ELISA, Immunohistochemistry (IHC), Immunohistochemistry (Paraffin-embedded Sections) (IHC (p))

Product Details

Brand:	IHC-plus™
Immunogen:	GALT (AAH15045, 1 a.a. ~ 380 a.a) full length recombinant protein with GST tag. MW of the GST tag alone is 26 KDa. Type of Immunogen: Recombinant protein
Clone:	4C11
Isotype:	IgG2a kappa
Specificity:	Human GALT
Purification:	Purified from ascites by Protein A

Target Details

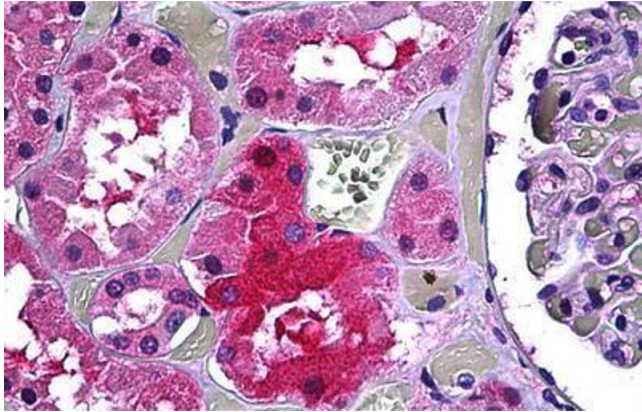
Target:	GALT
Alternative Name:	GALT (GALT Products)
Background:	Name/Gene ID: GALT Synonyms: GALT, Gal-1-P uridylyltransferase
Gene ID:	2592
UniProt:	P07902

Application Details

Application Notes:	Approved: ELISA, IHC, IHC-P (10 µg/mL), WB Usage: Immunohistochemistry: Formalin-fixed paraffin-embedded sections. Sandwich ELISA: Recombinant protein. Western Blot using cell lysates, transfected lysate and the recombinant protein used as the immunogen.
Comment:	Target Species of Antibody: Human
Restrictions:	For Research Use only

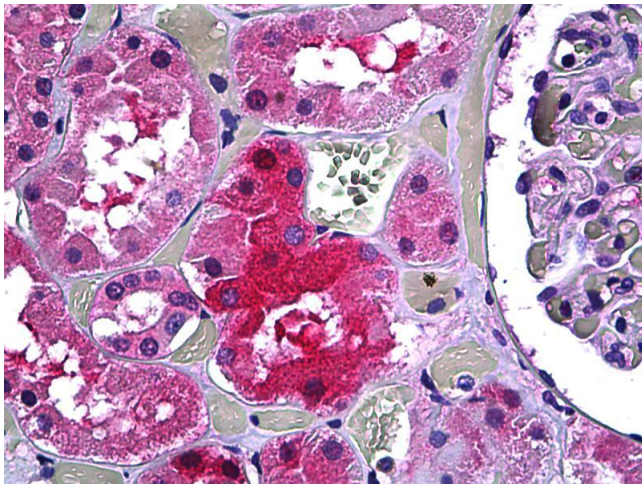
Handling

Format:	Liquid
Concentration:	Lot specific
Buffer:	PBS, pH 7.4
Handling Advice:	avoid freeze thaw cycles.
Storage:	4 °C,-20 °C
Storage Comment:	Short term 4°C, long term aliquot and store at -20°C, avoid freeze-thaw cycles.



Immunohistochemistry (Formalin-fixed Paraffin-embedded Sections)

Image 1. Human Kidney, Tubules: Formalin-Fixed, Paraffin-Embedded (FFPE)



Immunohistochemistry

Image 2. Anti-GALT antibody IHC of human kidney, tubules. Immunohistochemistry of formalin-fixed, paraffin-embedded tissue after heat-induced antigen retrieval. Antibody concentration 10 ug/ml.