



[Go to Product page](#)

Datasheet for ABIN6260510  
**anti-Caveolin 3 antibody (N-Term)**

1 Image

Overview

Quantity:	100 µL
Target:	Caveolin 3 (CAV3)
Binding Specificity:	N-Term
Reactivity:	Human, Mouse, Rat
Host:	Rabbit
Clonality:	Polyclonal
Conjugate:	This Caveolin 3 antibody is un-conjugated
Application:	Western Blotting (WB), Immunohistochemistry (IHC), ELISA

Product Details

Immunogen:	A synthesized peptide derived from human Caveolin 3, corresponding to a region within N-terminal amino acids.
Isotype:	IgG
Specificity:	Caveolin 3 Antibody detects endogenous levels of total Caveolin 3.
Predicted Reactivity:	Pig,Bovine,Horse,Sheep,Dog
Purification:	The antiserum was purified by peptide affinity chromatography using SulfoLink™ Coupling Resin (Thermo Fisher Scientific).

Target Details

Target:	Caveolin 3 (CAV3)
---------	-------------------

## Target Details

---

Alternative Name:	CAV3 ( <a href="#">CAV3 Products</a> )
Background:	<p>Description: May act as a scaffolding protein within caveolar membranes. Interacts directly with G-protein alpha subunits and can functionally regulate their activity. May also regulate voltage-gated potassium channels. Plays a role in the sarcolemma repair mechanism of both skeletal muscle and cardiomyocytes that permits rapid resealing of membranes disrupted by mechanical stress (By similarity). Mediates the recruitment of CAVIN2 and CAVIN3 proteins to the caveolae (PubMed:19262564).</p> <p>Gene: CAV3</p>
Molecular Weight:	17 kDa
Gene ID:	859
UniProt:	<a href="#">P56539</a>
Pathways:	<a href="#">Carbohydrate Homeostasis</a> , <a href="#">Regulation of Muscle Cell Differentiation</a> , <a href="#">Regulation of Cell Size</a> , <a href="#">Skeletal Muscle Fiber Development</a> , <a href="#">Negative Regulation of Transporter Activity</a>

## Application Details

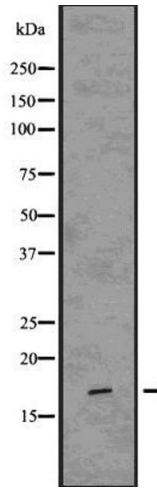
---

Application Notes:	WB 1:1000-3000, IHC 1:50-1:200, ELISA(peptide) 1:20000-1:40000
Restrictions:	For Research Use only

## Handling

---

Format:	Liquid
Concentration:	1 mg/mL
Buffer:	Rabbit IgG in phosphate buffered saline , pH 7.4, 150 mM NaCl, 0.02 % sodium azide and 50 % glycerol.
Preservative:	Sodium azide
Precaution of Use:	This product contains Sodium azide: a POISONOUS AND HAZARDOUS SUBSTANCE which should be handled by trained staff only.
Storage:	-20 °C
Storage Comment:	Store at -20 °C. Stable for 12 months from date of receipt.
Expiry Date:	12 months



### Western Blotting

**Image 1.** Western blot analysis of Caveolin 3 using HepG2 whole cell lysates