



[Go to Product page](#)

Datasheet for ABIN6260516
anti-CBP antibody (C-Term)

5 Images

Overview

Quantity:	100 µL
Target:	CBP (CREBBP)
Binding Specificity:	C-Term
Reactivity:	Human, Mouse, Rat
Host:	Rabbit
Clonality:	Polyclonal
Conjugate:	This CBP antibody is un-conjugated
Application:	Western Blotting (WB), Immunohistochemistry (IHC), ELISA, Immunofluorescence (IF), Immunocytochemistry (ICC)

Product Details

Immunogen:	A synthesized peptide derived from human CREB-BP, corresponding to a region within C-terminal amino acids.
Isotype:	IgG
Specificity:	CREB-BP Antibody detects endogenous levels of total CREB-BP.
Predicted Reactivity:	Pig,Bovine,Horse,Sheep,Dog,Chicken,Xenopus
Purification:	The antiserum was purified by peptide affinity chromatography using SulfoLink™ Coupling Resin (Thermo Fisher Scientific).

Target Details

Target:	CBP (CREBBP)
---------	--------------

Target Details

Alternative Name: CREBBP ([CREBBP Products](#))

Background: Description: Acetylates histones, giving a specific tag for transcriptional activation. Also acetylates non-histone proteins, like NCOA3 and FOXO1. Binds specifically to phosphorylated CREB and enhances its transcriptional activity toward cAMP-responsive genes. Acts as a coactivator of ALX1. Acts as a circadian transcriptional coactivator which enhances the activity of the circadian transcriptional activators: NPAS2-ARNTL/BMAL1 and CLOCK-ARNTL/BMAL1 heterodimers. Acetylates PCNA, acetylation promotes removal of chromatin-bound PCNA and its degradation during nucleotide excision repair (NER) (PubMed:24939902).
Gene: CREBBP

Molecular Weight: 265kDa

Gene ID: 1387

UniProt: [Q92793](#)

Pathways: [TCR Signaling](#), [Interferon-gamma Pathway](#), [Stem Cell Maintenance](#), [Chromatin Binding](#), [Regulation of Lipid Metabolism by PPARalpha](#)

Application Details

Application Notes: WB 1:500-1:2000, IHC 1:50-1:200, IF/ICC 1:100-1:500, ELISA(peptide) 1:20000-1:40000

Restrictions: For Research Use only

Handling

Format: Liquid

Concentration: 1 mg/mL

Buffer: Rabbit IgG in phosphate buffered saline , pH 7.4, 150 mM NaCl, 0.02 % sodium azide and 50 % glycerol.

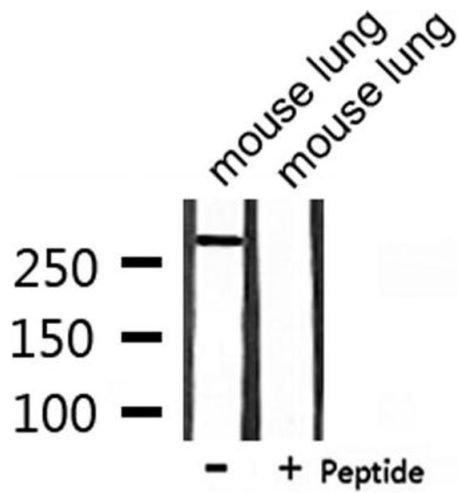
Preservative: Sodium azide

Precaution of Use: This product contains Sodium azide: a POISONOUS AND HAZARDOUS SUBSTANCE which should be handled by trained staff only.

Storage: -20 °C

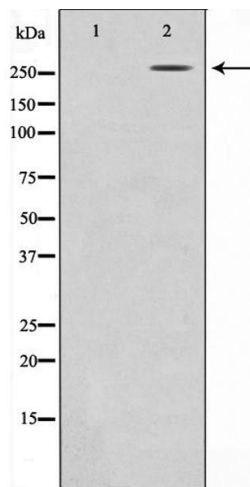
Storage Comment: Store at -20 °C. Stable for 12 months from date of receipt.

Expiry Date: 12 months



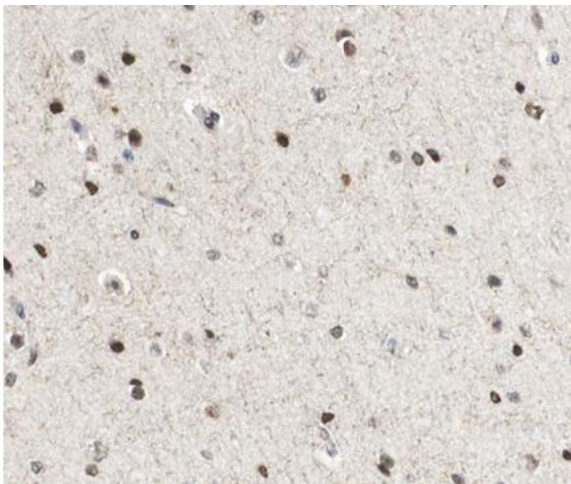
Western Blotting

Image 1. Western blot analysis of extracts from mouse lung, using CBP Antibody. The lane on the right is treated with the antigen-specific peptide.



Western Blotting

Image 2. Western blot analysis on HeLa cell lysate using CBP Antibody. The lane on the left is treated with the antigen-specific peptide.



Immunohistochemistry

Image 3. ABIN6267035 at 1/100 staining human Brain tissue sections by IHC-P. The tissue was formaldehyde fixed and a heat mediated antigen retrieval step in citrate buffer was performed. The tissue was then blocked and incubated with the antibody for 1.5 hours at 22°C. An HRP conjugated goat anti-rabbit antibody was used as the secondary.

Please check the [product details page](#) for more images. Overall 5 images are available for ABIN6260516.