



[Go to Product page](#)

Datasheet for ABIN6260521  
**anti-CBX6 antibody (N-Term)**

4 Images

Overview

Quantity:	100 µL
Target:	CBX6
Binding Specificity:	N-Term
Reactivity:	Human, Mouse, Rat
Host:	Rabbit
Clonality:	Polyclonal
Conjugate:	This CBX6 antibody is un-conjugated
Application:	Western Blotting (WB), ELISA, Immunofluorescence (IF), Immunocytochemistry (ICC)

Product Details

Immunogen:	A synthesized peptide derived from human CBX6, corresponding to a region within N-terminal amino acids.
Isotype:	IgG
Specificity:	CBX6 Antibody detects endogenous levels of total CBX6.
Predicted Reactivity:	Pig,Bovine,Xenopus
Purification:	The antiserum was purified by peptide affinity chromatography using SulfoLink™ Coupling Resin (Thermo Fisher Scientific).

Target Details

Target:	CBX6
---------	------

## Target Details

---

Alternative Name: [CBX6 \(CBX6 Products\)](#)

---

Background: Description: Component of a Polycomb group (PcG) multiprotein PRC1-like complex, a complex class required to maintain the transcriptionally repressive state of many genes, including Hox genes, throughout development (PubMed:21282530). PcG PRC1 complex acts via chromatin remodeling and modification of histones, it mediates monoubiquitination of histone H2A 'Lys-119', rendering chromatin heritably changed in its expressibility. Possibly contributes to the target selectivity of the PRC1 complex by binding specific regions of chromatin (PubMed:18927235). Recruitment to chromatin might occur in an H3K27me3-independent fashion (By similarity). May have a PRC1-independent function in embryonic stem cells (By similarity).  
Gene: CBX6

---

Molecular Weight: 44kDa

---

Gene ID: 23466

---

UniProt: [O95503](#)

---

## Application Details

---

Application Notes: WB 1:500-1:2000, IF/ICC 1:100-1:500, ELISA(peptide) 1:20000-1:40000

---

Restrictions: For Research Use only

---

## Handling

---

Format: Liquid

---

Concentration: 1 mg/mL

---

Buffer: Rabbit IgG in phosphate buffered saline , pH 7.4, 150 mM NaCl, 0.02 % sodium azide and 50 % glycerol.

---

Preservative: Sodium azide

---

Precaution of Use: This product contains Sodium azide: a POISONOUS AND HAZARDOUS SUBSTANCE which should be handled by trained staff only.

---

Storage: -20 °C

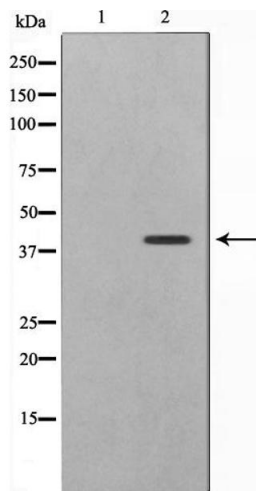
---

Storage Comment: Store at -20 °C. Stable for 12 months from date of receipt.

---

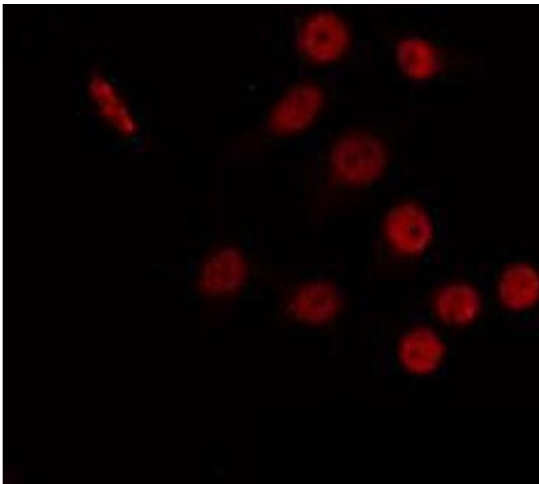
Expiry Date: 12 months

---



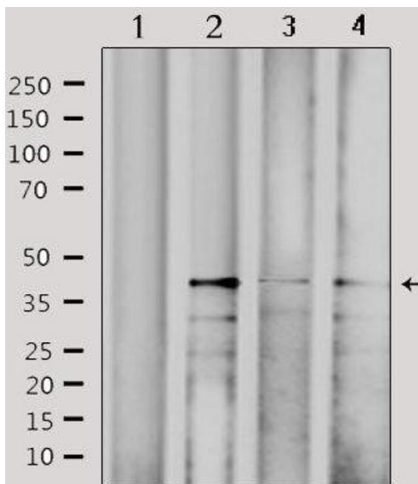
### Western Blotting

**Image 1.** Western blot analysis on 293 cell lysate using CBX6 Antibody, The lane on the left is treated with the antigen-specific peptide.



### Immunofluorescence (fixed cells)

**Image 2.** ABIN6266765 staining 293 by IF/ICC. The sample were fixed with PFA and permeabilized in 0.1% Triton X-100, then blocked in 10% serum for 45 minutes at 25°C. The primary antibody was diluted at 1/200 and incubated with the sample for 1 hour at 37°C. An Alexa Fluor 594 conjugated goat anti-rabbit IgG (H+L) Ab, diluted at 1/600, was used as the secondary antibody.



### Western Blotting

**Image 3.** Western blot analysis of extracts from various samples, using CBX6 Antibody. Lane 1: 293 treated with blocking peptide; Lane 2: 293; Lane 3: HepG2; Lane 4: HeLa;

Please check the [product details page](#) for more images. Overall 4 images are available for ABIN6260521.