



[Go to Product page](#)

Datasheet for ABIN6260522
anti-CBX8 antibody (Internal Region)

1 Image

Overview

Quantity:	100 µL
Target:	CBX8
Binding Specificity:	Internal Region
Reactivity:	Human, Mouse, Rat
Host:	Rabbit
Clonality:	Polyclonal
Conjugate:	This CBX8 antibody is un-conjugated
Application:	Western Blotting (WB), ELISA, Immunofluorescence (IF), Immunocytochemistry (ICC)

Product Details

Immunogen:	A synthesized peptide derived from human CBX8, corresponding to a region within the internal amino acids.
Isotype:	IgG
Specificity:	CBX8 Antibody detects endogenous levels of total CBX8.
Predicted Reactivity:	Pig,Bovine,Sheep,Rabbit
Purification:	The antiserum was purified by peptide affinity chromatography using SulfoLink™ Coupling Resin (Thermo Fisher Scientific).

Target Details

Target:	CBX8
---------	------

Target Details

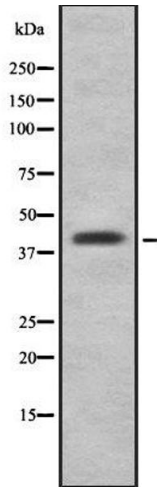
Alternative Name:	CBX8 (CBX8 Products)
Background:	<p>Description: Component of a Polycomb group (PcG) multiprotein PRC1-like complex, a complex class required to maintain the transcriptionally repressive state of many genes, including Hox genes, throughout development. PcG PRC1 complex acts via chromatin remodeling and modification of histones, it mediates monoubiquitination of histone H2A 'Lys-119', rendering chromatin heritably changed in its expressibility.</p> <p>Gene: CBX8</p>
Molecular Weight:	43 kDa
Gene ID:	57332
UniProt:	Q9HC52

Application Details

Application Notes:	WB 1:1000-3000, IF/ICC 1:100-1:500, ELISA(peptide) 1:20000-1:40000
Restrictions:	For Research Use only

Handling

Format:	Liquid
Concentration:	1 mg/mL
Buffer:	Rabbit IgG in phosphate buffered saline , pH 7.4, 150 mM NaCl, 0.02 % sodium azide and 50 % glycerol.
Preservative:	Sodium azide
Precaution of Use:	This product contains Sodium azide: a POISONOUS AND HAZARDOUS SUBSTANCE which should be handled by trained staff only.
Storage:	-20 °C
Storage Comment:	Store at -20 °C. Stable for 12 months from date of receipt.
Expiry Date:	12 months



Western Blotting

Image 1. Western blot analysis of CBX8 using A549 whole cell lysates