

Datasheet for ABIN6260528  
**anti-CCDC22 antibody (C-Term)**[Go to Product page](#)

## 2 Images

## Overview

Quantity:	100 µL
Target:	CCDC22
Binding Specificity:	C-Term
Reactivity:	Human, Mouse, Rat
Host:	Rabbit
Clonality:	Polyclonal
Conjugate:	This CCDC22 antibody is un-conjugated
Application:	Western Blotting (WB), Immunohistochemistry (IHC)

## Product Details

Immunogen:	A synthesized peptide derived from human CCDC22, corresponding to a region within C-terminal amino acids.
Isotype:	IgG
Specificity:	CCDC22 Antibody detects endogenous levels of total CCDC22.
Predicted Reactivity:	Pig,Horse,Sheep,Rabbit,Dog,Xenopus
Purification:	The antiserum was purified by peptide affinity chromatography using SulfoLink™ Coupling Resin (Thermo Fisher Scientific).

## Target Details

Target:	CCDC22
---------	--------

## Target Details

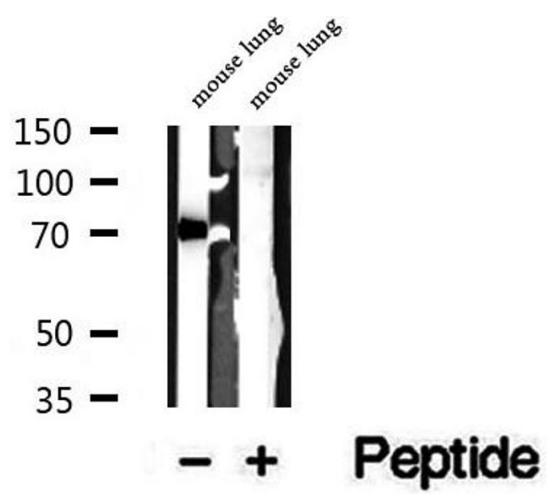
Alternative Name:	CCDC22 ( <a href="#">CCDC22 Products</a> )
Background:	<p>Description: Involved in regulation of NF-kappa-B signaling. Promotes ubiquitination of I-kappa-B-kinase subunit IKBKB and its subsequent proteasomal degradation leading to NF-kappa-B activation, the function may involve association with COMMD8 and a CUL1-dependent E3 ubiquitin ligase complex. May down-regulate NF-kappa-B activity via association with COMMD1 and involving a CUL2-dependent E3 ubiquitin ligase complex. Regulates the cellular localization of COMM domain-containing proteins, such as COMMD1 and COMMD10 (PubMed:23563313). Plays a role in copper ion homeostasis. Involved in copper-dependent ATP7A trafficking between the trans-Golgi network and vesicles in the cell periphery, the function is proposed to depend on its association within the CCC complex and cooperation with the WASH complex on early endosomes (PubMed:25355947).</p> <p>Gene: CCDC22</p>
Molecular Weight:	71 kDa
Gene ID:	28952
UniProt:	<a href="#">O60826</a>

## Application Details

Application Notes:	WB 1:500-1:2000, IHC 1:50-1:200
Restrictions:	For Research Use only

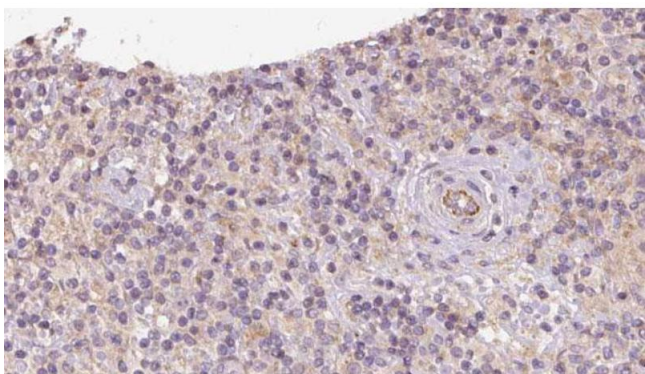
## Handling

Format:	Liquid
Concentration:	1 mg/mL
Buffer:	Rabbit IgG in phosphate buffered saline , pH 7.4, 150 mM NaCl, 0.02 % sodium azide and 50 % glycerol.
Preservative:	Sodium azide
Precaution of Use:	This product contains Sodium azide: a POISONOUS AND HAZARDOUS SUBSTANCE which should be handled by trained staff only.
Storage:	-20 °C
Storage Comment:	Store at -20 °C. Stable for 12 months from date of receipt.
Expiry Date:	12 months



Western Blotting

**Image 1.** Western blot analysis of extracts of mouse lung tissue, using CCDC22 antibody.



Immunohistochemistry

**Image 2.** ABIN6273095 at 1/100 staining Human lymph cancer tissue by IHC-P. The sample was formaldehyde fixed and a heat mediated antigen retrieval step in citrate buffer was performed. The sample was then blocked and incubated with the antibody for 1.5 hours at 22°C. An HRP conjugated goat anti-rabbit antibody was used as the secondary.