



[Go to Product page](#)

Datasheet for ABIN6260564

## anti-CCRL2 antibody (Internal Region)

### 2 Images

#### Overview

Quantity:	100 µL
Target:	CCRL2
Binding Specificity:	Internal Region
Reactivity:	Human, Rat
Host:	Rabbit
Clonality:	Polyclonal
Conjugate:	This CCRL2 antibody is un-conjugated
Application:	Western Blotting (WB), ELISA, Immunofluorescence (IF), Immunocytochemistry (ICC)

#### Product Details

Immunogen:	A synthesized peptide derived from human CCRL2, corresponding to a region within the internal amino acids.
Isotype:	IgG
Specificity:	CCRL2 Antibody detects endogenous levels of total CCRL2.
Predicted Reactivity:	Pig, Sheep, Dog
Purification:	The antiserum was purified by peptide affinity chromatography using SulfoLink™ Coupling Resin (Thermo Fisher Scientific).

#### Target Details

Target:	CCRL2
---------	-------

## Target Details

---

Alternative Name: CCRL2 ([CCRL2 Products](#))

---

Background: Description: Receptor for CCL19 and chemerin/RARRES2. Does not appear to be a signaling receptor, but may have a role in modulating chemokine-triggered immune responses by capturing and internalizing CCL19 or by presenting RARRES2 ligand to CMKLR1, a functional signaling receptors. Plays a critical role for the development of Th2 responses.  
Gene: CCRL2

---

Molecular Weight: 39 kDa

---

Gene ID: 9034

---

UniProt: [000421](#)

---

## Application Details

---

Application Notes: WB 1:1000-3000, IF/ICC 1:100-1:500, ELISA(peptide) 1:20000-1:40000

---

Restrictions: For Research Use only

---

## Handling

---

Format: Liquid

---

Concentration: 1 mg/mL

---

Buffer: Rabbit IgG in phosphate buffered saline , pH 7.4, 150 mM NaCl, 0.02 % sodium azide and 50 % glycerol.

---

Preservative: Sodium azide

---

Precaution of Use: This product contains Sodium azide: a POISONOUS AND HAZARDOUS SUBSTANCE which should be handled by trained staff only.

---

Storage: -20 °C

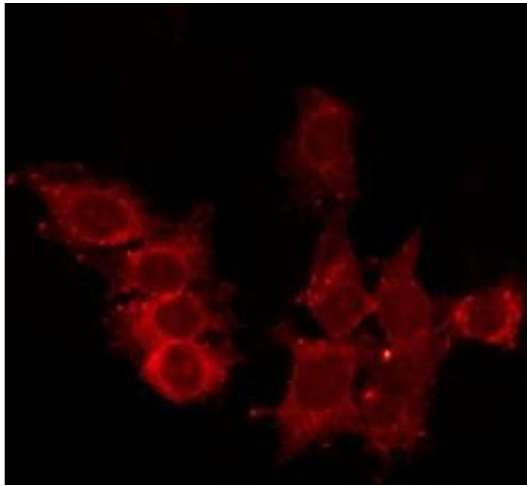
---

Storage Comment: Store at -20 °C. Stable for 12 months from date of receipt.

---

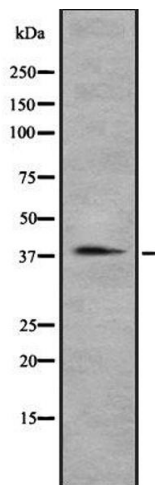
Expiry Date: 12 months

---



### Immunofluorescence (fixed cells)

**Image 1.** ABIN6278557 staining HepG2 by IF/ICC. The sample were fixed with PFA and permeabilized in 0.1% Triton X-100, then blocked in 10% serum for 45 minutes at 25°C. The primary antibody was diluted at 1/200 and incubated with the sample for 1 hour at 37°C. An Alexa Fluor 594 conjugated goat anti-rabbit IgG (H+L) Ab, diluted at 1/600, was used as the secondary antibody



### Western Blotting

**Image 2.** Western blot analysis of CCRL2 using A549 whole cell lysates