



[Go to Product page](#)

Datasheet for ABIN6260580  
**anti-CD164L2 antibody**

2 Images

### Overview

Quantity:	100 µL
Target:	CD164L2
Reactivity:	Human
Host:	Rabbit
Clonality:	Polyclonal
Conjugate:	This CD164L2 antibody is un-conjugated
Application:	Western Blotting (WB), ELISA, Immunohistochemistry (IHC)

### Product Details

Immunogen:	A synthesized peptide derived from human CD164L2
Isotype:	IgG
Specificity:	CD164L2 Antibody detects endogenous levels of total CD164L2
Cross-Reactivity:	Human
Purification:	The antiserum was purified by peptide affinity chromatography using SulfoLink™ Coupling Resin (Thermo Fisher Scientific).

### Target Details

Target:	CD164L2
Alternative Name:	CD164L2 ( <a href="#">CD164L2 Products</a> )
Background:	Gene: CD164L2

## Target Details

Molecular Weight: 19 kDa

Gene ID: 388611

UniProt: [Q6UWJ8](#)

## Application Details

Application Notes: WB 1:1000-3000 IHC 1:200

Restrictions: For Research Use only

## Handling

Format: Liquid

Concentration: 1 mg/mL

Buffer: Rabbit IgG in phosphate buffered saline , pH 7.4, 150 mM NaCl, 0.02 % sodium azide and 50 % glycerol.

Preservative: Sodium azide

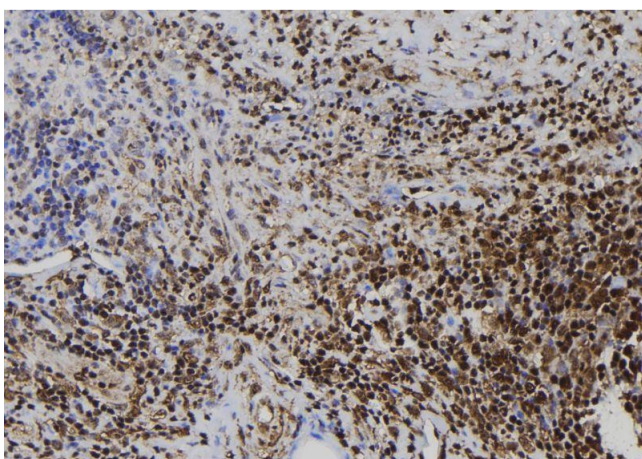
Precaution of Use: This product contains Sodium azide: a POISONOUS AND HAZARDOUS SUBSTANCE which should be handled by trained staff only.

Storage: -20 °C

Storage Comment: Store at -20 °C. Stable for 12 months from date of receipt

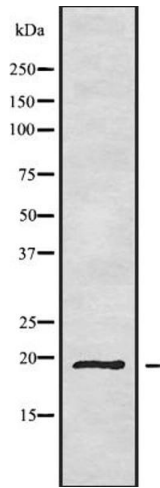
Expiry Date: 12 months

## Images



### Immunohistochemistry

**Image 1.** ABIN6272499 at 1/100 staining Human spleen tissue by IHC-P. The sample was formaldehyde fixed and a heat mediated antigen retrieval step in citrate buffer was performed. The sample was then blocked and incubated with the antibody for 1.5 hours at 22°C. An HRP conjugated goat anti-rabbit antibody was used as the secondary.



### Western Blotting

**Image 2.** Western blot analysis of CD164L2 using HepG2 whole cell lysates