

Datasheet for ABIN6260588

anti-CD2BP2 antibody (Internal Region)[Go to Product page](#)**3** Images

Overview

Quantity:	100 µL
Target:	CD2BP2
Binding Specificity:	Internal Region
Reactivity:	Human, Mouse
Host:	Rabbit
Clonality:	Polyclonal
Conjugate:	This CD2BP2 antibody is un-conjugated
Application:	Western Blotting (WB), ELISA, Immunocytochemistry (ICC), Immunofluorescence (IF)

Product Details

Immunogen:	A synthesized peptide derived from human CD2 Tail-binding, corresponding to a region within the internal amino acids.
Isotype:	IgG
Specificity:	CD2 Tail-binding Antibody detects endogenous levels of total CD2 Tail-binding.
Predicted Reactivity:	Pig,Bovine,Horse,Sheep,Rabbit,Dog
Purification:	The antiserum was purified by peptide affinity chromatography using SulfoLink™ Coupling Resin (Thermo Fisher Scientific).

Target Details

Target:	CD2BP2
---------	--------

Target Details

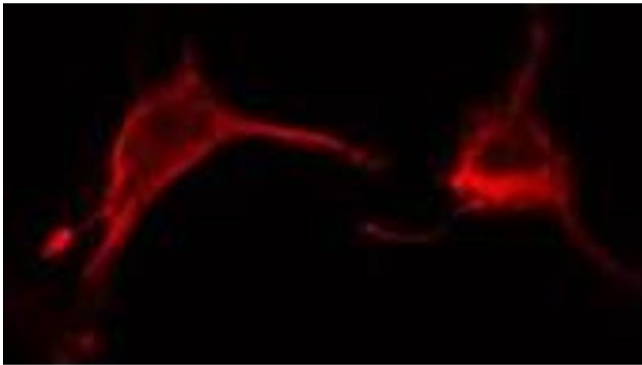
Alternative Name:	CD2BP2 (CD2BP2 Products)
Background:	Description: Involved in pre-mRNA splicing as component of the U5 snRNP complex that is involved in spliceosome assembly. Gene: CD2BP2
Molecular Weight:	37 kDa
Gene ID:	10421
UniProt:	O95400
Pathways:	Ribonucleoprotein Complex Subunit Organization

Application Details

Application Notes:	WB 1:1000-3000, IF/ICC 1:100-1:500, ELISA(peptide) 1:20000-1:40000
Restrictions:	For Research Use only

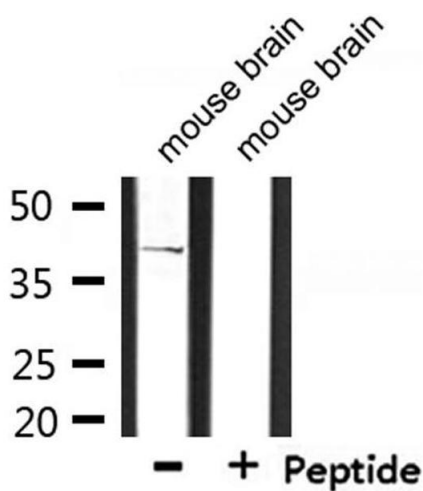
Handling

Format:	Liquid
Concentration:	1 mg/mL
Buffer:	Rabbit IgG in phosphate buffered saline , pH 7.4, 150 mM NaCl, 0.02 % sodium azide and 50 % glycerol.
Preservative:	Sodium azide
Precaution of Use:	This product contains Sodium azide: a POISONOUS AND HAZARDOUS SUBSTANCE which should be handled by trained staff only.
Storage:	-20 °C
Storage Comment:	Store at -20 °C. Stable for 12 months from date of receipt.
Expiry Date:	12 months



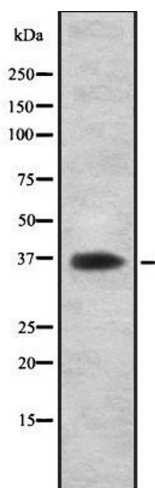
Immunofluorescence (fixed cells)

Image 1. ABIN6278558 staining Hela cells by IF/ICC. The sample were fixed with PFA and permeabilized in 0.1% Triton X-100, then blocked in 10% serum for 45 minutes at 25°C. The primary antibody was diluted at 1/200 and incubated with the sample for 1 hour at 37°C. An Alexa Fluor 594 conjugated goat anti-rabbit IgG (H+L) antibody (Cat.# S0006), diluted at 1/600, was used as secondary antibody



Western Blotting

Image 2. Western blot analysis of extracts from mouse brain, using CD2 Tail-binding Antibody.



Western Blotting

Image 3. Western blot analysis of CD2 Tail-binding using A549 whole cell lysates