



Datasheet for ABIN6260608
anti-CD300a antibody (Internal Region)



[Go to Product page](#)

1 Image

Overview

Quantity:	100 µL
Target:	CD300a (CD300A)
Binding Specificity:	Internal Region
Reactivity:	Human
Host:	Rabbit
Clonality:	Polyclonal
Conjugate:	This CD300a antibody is un-conjugated
Application:	Western Blotting (WB), ELISA, Immunofluorescence (IF), Immunocytochemistry (ICC)

Product Details

Immunogen:	A synthesized peptide derived from human CD300A, corresponding to a region within the internal amino acids.
Isotype:	IgG
Specificity:	CD300A Antibody detects endogenous levels of total CD300A.
Purification:	The antiserum was purified by peptide affinity chromatography using SulfoLink™ Coupling Resin (Thermo Fisher Scientific).

Target Details

Target:	CD300a (CD300A)
Alternative Name:	CD300A (CD300A Products)

Target Details

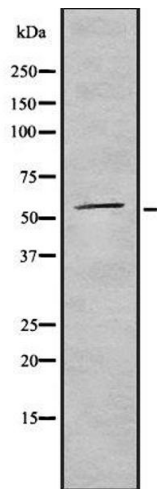
Background:	Description: Inhibitory receptor which may contribute to the down-regulation of cytolytic activity in natural killer (NK) cells, and to the down-regulation of mast cell degranulation (PubMed:10746781, PubMed:16339535, PubMed:9701027). Negatively regulates the Toll-like receptor (TLR) signaling mediated by MYD88 but not TRIF through activation of PTPN6 (PubMed:22043923). Gene: CD300A
Molecular Weight:	60 kDa
Gene ID:	11314
UniProt:	Q9UGN4
Pathways:	Regulation of Leukocyte Mediated Immunity , Positive Regulation of Immune Effector Process

Application Details

Application Notes:	WB 1:1000-3000, ELISA(peptide) 1:20000-1:40000, IF/ICC 1:100-1:500
Restrictions:	For Research Use only

Handling

Format:	Liquid
Concentration:	1 mg/mL
Buffer:	Rabbit IgG in phosphate buffered saline , pH 7.4, 150 mM NaCl, 0.02 % sodium azide and 50 % glycerol.
Preservative:	Sodium azide
Precaution of Use:	This product contains Sodium azide: a POISONOUS AND HAZARDOUS SUBSTANCE which should be handled by trained staff only.
Storage:	-20 °C
Storage Comment:	Store at -20 °C. Stable for 12 months from date of receipt.
Expiry Date:	12 months



Western Blotting

Image 1. Western blot analysis of CD300A using K562 whole cell lysates