

Datasheet for ABIN6260609
anti-CD300LB antibody (C-Term)[Go to Product page](#)

2 Images

Overview

Quantity:	100 µL
Target:	CD300LB (TREM5)
Binding Specificity:	C-Term
Reactivity:	Human
Host:	Rabbit
Clonality:	Polyclonal
Conjugate:	This CD300LB antibody is un-conjugated
Application:	ELISA, Western Blotting (WB), Immunocytochemistry (ICC), Immunofluorescence (IF), Immunohistochemistry (IHC)

Product Details

Immunogen:	A synthesized peptide derived from human CD300LB, corresponding to a region within C-terminal amino acids.
Isotype:	IgG
Specificity:	CD300LB Antibody detects endogenous levels of total CD300LB.
Purification:	The antiserum was purified by peptide affinity chromatography using SulfoLink™ Coupling Resin (Thermo Fisher Scientific).

Target Details

Target:	CD300LB (TREM5)
Alternative Name:	CD300LB (TREM5 Products)

Target Details

Background:	Description: Acts as an activating immune receptor through its interaction with ITAM-bearing adapter TYROBP, and also independently by recruitment of GRB2. Gene: CD300LB
-------------	--

Molecular Weight:	23 kDa
-------------------	--------

Gene ID:	124599
----------	--------

UniProt:	A8K4G0
----------	------------------------

Application Details

Application Notes:	WB 1:1000-3000, IHC 1:200, ELISA(peptide) 1:20000-1:40000, IF/ICC 1:100-1:500
--------------------	---

Restrictions:	For Research Use only
---------------	-----------------------

Handling

Format:	Liquid
---------	--------

Concentration:	1 mg/mL
----------------	---------

Buffer:	Rabbit IgG in phosphate buffered saline , pH 7.4, 150 mM NaCl, 0.02 % sodium azide and 50 % glycerol.
---------	---

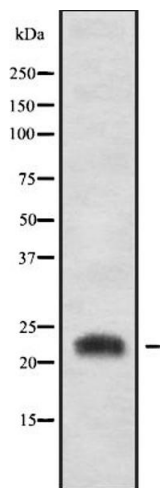
Preservative:	Sodium azide
---------------	--------------

Precaution of Use:	This product contains Sodium azide: a POISONOUS AND HAZARDOUS SUBSTANCE which should be handled by trained staff only.
--------------------	--

Storage:	-20 °C
----------	--------

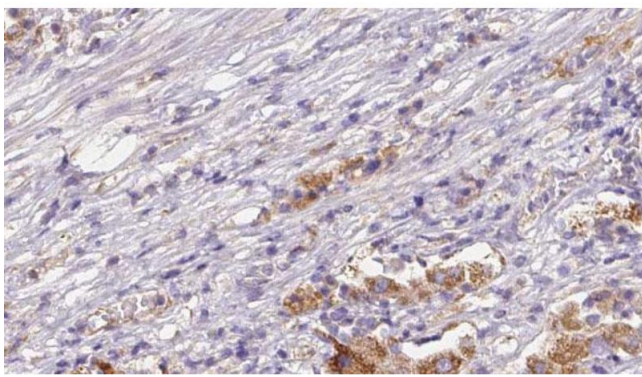
Storage Comment:	Store at -20 °C. Stable for 12 months from date of receipt.
------------------	---

Expiry Date:	12 months
--------------	-----------



Western Blotting

Image 1. Western blot analysis of CD300LB using HT-29 whole cell lysates



Immunohistochemistry

Image 2. ABIN6272632 at 1/100 staining Human liver cancer tissue by IHC-P. The sample was formaldehyde fixed and a heat mediated antigen retrieval step in citrate buffer was performed. The sample was then blocked and incubated with the antibody for 1.5 hours at 22°C. An HRP conjugated goat anti-rabbit antibody was used as the secondary.