

Datasheet for ABIN6260617
anti-CD38 antibody (Internal Region)[Go to Product page](#)

4 Images

Overview

Quantity:	100 µL
Target:	CD38
Binding Specificity:	Internal Region
Reactivity:	Human, Mouse, Rat
Host:	Rabbit
Clonality:	Polyclonal
Conjugate:	This CD38 antibody is un-conjugated
Application:	Immunohistochemistry (IHC), Western Blotting (WB), Immunofluorescence (IF), ELISA, Immunocytochemistry (ICC)

Product Details

Immunogen:	A synthesized peptide derived from human CD38, corresponding to a region within the internal amino acids.
Isotype:	IgG
Specificity:	CD38 Antibody detects endogenous levels of total CD38.
Predicted Reactivity:	Rabbit,Chicken
Purification:	The antiserum was purified by peptide affinity chromatography using SulfoLink™ Coupling Resin (Thermo Fisher Scientific).

Target Details

Target:	CD38
---------	------

Target Details

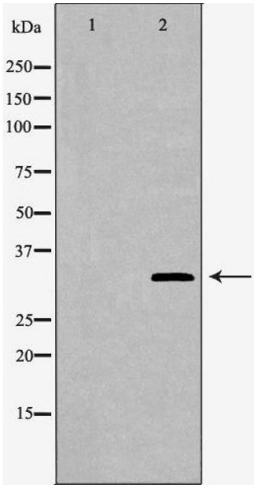
Abstract:	CD38 Products
Background:	<p>Description: Synthesizes the second messengers cyclic ADP-ribose and nicotinate-adenine dinucleotide phosphate, the former a second messenger for glucose-induced insulin secretion. Also has cADPr hydrolase activity. Also moonlights as a receptor in cells of the immune system.</p> <p>Gene: CD38</p>
Molecular Weight:	34kDa
Gene ID:	952
UniProt:	P28907

Application Details

Application Notes:	WB 1:500-1:2000, IHC 1:50-1:200, IF/ICC 1:100-1:500, ELISA(peptide) 1:20000-1:40000
Restrictions:	For Research Use only

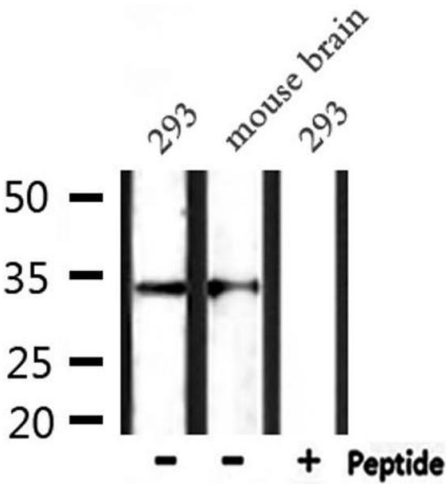
Handling

Format:	Liquid
Concentration:	1 mg/mL
Buffer:	Rabbit IgG in phosphate buffered saline , pH 7.4, 150 mM NaCl, 0.02 % sodium azide and 50 % glycerol.
Preservative:	Sodium azide
Precaution of Use:	This product contains Sodium azide: a POISONOUS AND HAZARDOUS SUBSTANCE which should be handled by trained staff only.
Storage:	-20 °C
Storage Comment:	Store at -20 °C. Stable for 12 months from date of receipt.
Expiry Date:	12 months



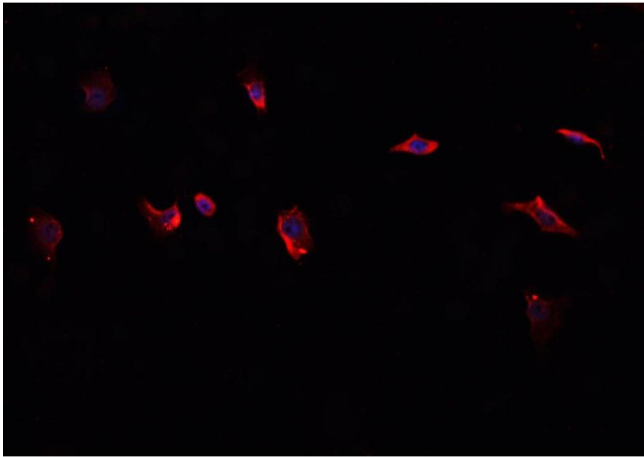
Western Blotting

Image 1. Western blot analysis of extracts of mouse spleen, using CD38 antibody. The lane on the left is treated with the antigen-specific peptide.



Western Blotting

Image 2. Western blot analysis of extracts from 293 and mouse brain, using CD38 Antibody.



Immunofluorescence (fixed cells)

Image 3. ABIN6276814 staining HepG2? cells by IF/ICC. The sample were fixed with PFA and permeabilized in 0.1% Triton X-100,then blocked in 10% serum for 45 minutes at 25°C. The primary antibody was diluted at 1/200 and incubated with the sample for 1 hour at 37°C. An Alexa Fluor 594 conjugated goat anti-rabbit IgG (H+L) antibody(Cat.# S0006), diluted at 1/600, was used as secondary antibody

Please check the [product details page](#) for more images. Overall 4 images are available for ABIN6260617.