

Datasheet for ABIN6260690

anti-CDC6 antibody

2 Images

[Go to Product page](#)

Overview

Quantity:	100 µL
Target:	CDC6
Reactivity:	Human
Host:	Rabbit
Clonality:	Polyclonal
Conjugate:	This CDC6 antibody is un-conjugated
Application:	Western Blotting (WB), ELISA, Immunofluorescence (IF), Immunocytochemistry (ICC)

Product Details

Immunogen:	A synthesized peptide derived from human CDC6
Isotype:	IgG
Specificity:	CDC6 Antibody detects endogenous levels of total CDC6
Cross-Reactivity:	Human
Purification:	The antiserum was purified by peptide affinity chromatography using SulfoLink™ Coupling Resin (Thermo Fisher Scientific).

Target Details

Target:	CDC6
Alternative Name:	CDC6 (CDC6 Products)
Background:	Description: Involved in the initiation of DNA replication. Also participates in checkpoint controls

Target Details

that ensure DNA replication is completed before mitosis is initiated.

Gene: CDC6

Molecular Weight: 63 kDa

Gene ID: 990

UniProt: [Q99741](#)

Pathways: [DNA Replication](#), [Synthesis of DNA](#)

Application Details

Application Notes: WB 1:1000-3000, IF/ICC 1:100-1:500

Restrictions: For Research Use only

Handling

Format: Liquid

Concentration: 1 mg/mL

Buffer: Rabbit IgG in phosphate buffered saline , pH 7.4, 150 mM NaCl, 0.02 % sodium azide and 50 % glycerol.

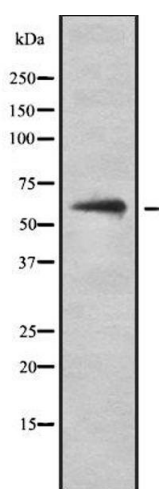
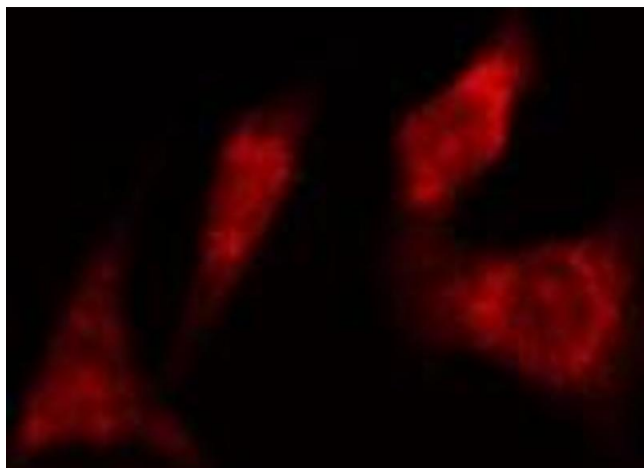
Preservative: Sodium azide

Precaution of Use: This product contains Sodium azide: a POISONOUS AND HAZARDOUS SUBSTANCE which should be handled by trained staff only.

Storage: -20 °C

Storage Comment: Store at -20 °C.Stable for 12 months from date of receipt

Expiry Date: 12 months



Immunofluorescence (fixed cells)

Image 1. ABIN6277985 staining HeLa cells by IF/ICC. The sample were fixed with PFA and permeabilized in 0.1% Triton X-100, then blocked in 10% serum for 45 minutes at 25°C. The primary antibody was diluted at 1/200 and incubated with the sample for 1 hour at 37°C. An Alexa Fluor 594 conjugated goat anti-rabbit IgG (H+L) antibody (Cat.# S0006), diluted at 1/600, was used as secondary antibody

Western Blotting

Image 2. Western blot analysis of CDC6 using RAW264.7 whole lysates