



[Go to Product page](#)

Datasheet for ABIN6260716  
**anti-CDK6 antibody (N-Term)**

2 Images

1 Publication

### Overview

Quantity:	100 µL
Target:	CDK6
Binding Specificity:	N-Term
Reactivity:	Human, Mouse, Rat
Host:	Rabbit
Clonality:	Polyclonal
Conjugate:	This CDK6 antibody is un-conjugated
Application:	Western Blotting (WB), Immunohistochemistry (IHC), ELISA

### Product Details

Immunogen:	A synthesized peptide derived from human CDK6, corresponding to a region within N-terminal amino acids.
Isotype:	IgG
Specificity:	CDK6 Antibody detects endogenous levels of total CDK6.
Predicted Reactivity:	Pig,Zebrafish,Bovine,Horse,Rabbit,Dog,Chicken
Purification:	The antiserum was purified by peptide affinity chromatography using SulfoLink™ Coupling Resin (Thermo Fisher Scientific).

### Target Details

Target:	CDK6
---------	------

## Target Details

---

Alternative Name: [CDK6 \(CDK6 Products\)](#)

---

Background: Description: Serine/threonine-protein kinase involved in the control of the cell cycle and differentiation, promotes G1/S transition. Phosphorylates pRB/RB1 and NPM1. Interacts with D-type G1 cyclins during interphase at G1 to form a pRB/RB1 kinase and controls the entrance into the cell cycle. Involved in initiation and maintenance of cell cycle exit during cell differentiation, prevents cell proliferation and regulates negatively cell differentiation, but is required for the proliferation of specific cell types (e.g. erythroid and hematopoietic cells). Essential for cell proliferation within the dentate gyrus of the hippocampus and the subventricular zone of the lateral ventricles. Required during thymocyte development. Promotes the production of newborn neurons, probably by modulating G1 length. Promotes, at least in astrocytes, changes in patterns of gene expression, changes in the actin cytoskeleton including loss of stress fibers, and enhanced motility during cell differentiation. Prevents myeloid differentiation by interfering with RUNX1 and reducing its transcription transactivation activity, but promotes proliferation of normal myeloid progenitors. Delays senescence. Promotes the proliferation of beta-cells in pancreatic islets of Langerhans. May play a role in the centrosome organization during the cell cycle phases (PubMed:23918663).  
Gene: CDK6

---

Molecular Weight: 36kDa

---

Gene ID: 1021

---

UniProt: [Q00534](#)

---

Pathways: [Cell Division Cycle, Mitotic G1-G1/S Phases](#)

---

## Application Details

---

Application Notes: WB 1:500-1:2000, IHC 1:50-1:200, ELISA(peptide) 1:20000-1:40000

---

Restrictions: For Research Use only

---

## Handling

---

Format: Liquid

---

Concentration: 1 mg/mL

---

Buffer: Rabbit IgG in phosphate buffered saline , pH 7.4, 150 mM NaCl, 0.02 % sodium azide and 50 % glycerol.

---

Preservative: Sodium azide

---

## Handling

Precaution of Use: This product contains Sodium azide: a POISONOUS AND HAZARDOUS SUBSTANCE which should be handled by trained staff only.

Storage: -20 °C

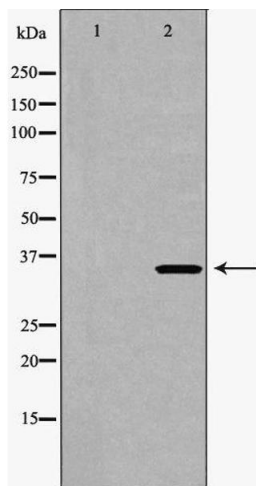
Storage Comment: Store at -20 °C. Stable for 12 months from date of receipt.

Expiry Date: 12 months

## Publications

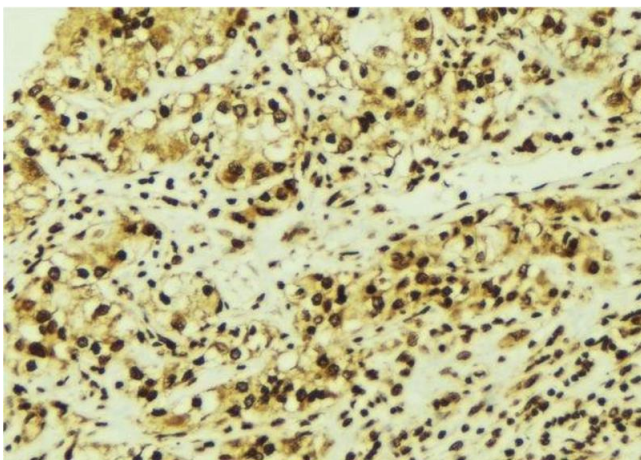
Product cited in: Li, Wang, Yu, Wu, Hu, Wang, Ye: "miR-3619-5p inhibits prostate cancer cell growth by activating CDKN1A expression." in: **Oncology reports**, Vol. 37, Issue 1, pp. 241-248, (2017) ([PubMed](#)).

## Images



### Western Blotting

**Image 1.** Western blot analysis of Hela whole cell lysates, using CDK6 Antibody. The lane on the left is treated with the antigen-specific peptide.



### Immunohistochemistry

**Image 2.** ABIN6276713 at 1/100 staining Human breast cancer tissue by IHC-P. The sample was formaldehyde fixed and a heat mediated antigen retrieval step in citrate buffer was performed. The sample was then blocked and incubated with the antibody for 1.5 hours at 22°C. An HRP conjugated goat anti-rabbit antibody was used as the secondary