

Datasheet for ABIN6260726
anti-CDKL4 antibody (Internal Region)

5 Images

[Go to Product page](#)

Overview

| | |
|----------------------|--|
| Quantity: | 100 µL |
| Target: | CDKL4 |
| Binding Specificity: | Internal Region |
| Reactivity: | Human, Rat |
| Host: | Rabbit |
| Clonality: | Polyclonal |
| Conjugate: | This CDKL4 antibody is un-conjugated |
| Application: | Western Blotting (WB), ELISA, Immunohistochemistry (IHC), Immunofluorescence (IF), Immunocytochemistry (ICC) |

Product Details

| | |
|-----------------------|---|
| Immunogen: | A synthesized peptide derived from human CDKL4, corresponding to a region within the internal amino acids. |
| Isotype: | IgG |
| Specificity: | CDKL4 Antibody detects endogenous levels of total CDKL4. |
| Predicted Reactivity: | Bovine, Sheep, Rabbit, Dog |
| Purification: | The antiserum was purified by peptide affinity chromatography using SulfoLink™ Coupling Resin (Thermo Fisher Scientific). |

Target Details

| | |
|---------|-------|
| Target: | CDKL4 |
|---------|-------|

Target Details

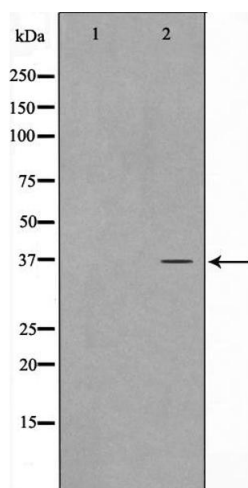
| | |
|-------------------|---|
| Alternative Name: | CDKL4 (CDKL4 Products) |
| Background: | Description: ATP + a protein = ADP + a phosphoprotein. Gene: CDKL4 |
| Molecular Weight: | 36kDa |
| Gene ID: | 344387 |
| UniProt: | Q5MAI5 |

Application Details

| | |
|--------------------|---|
| Application Notes: | WB 1:500-1:2000, IHC 1:50-1:200, IF/ICC 1:100-1:500, ELISA(peptide) 1:20000-1:40000 |
| Restrictions: | For Research Use only |

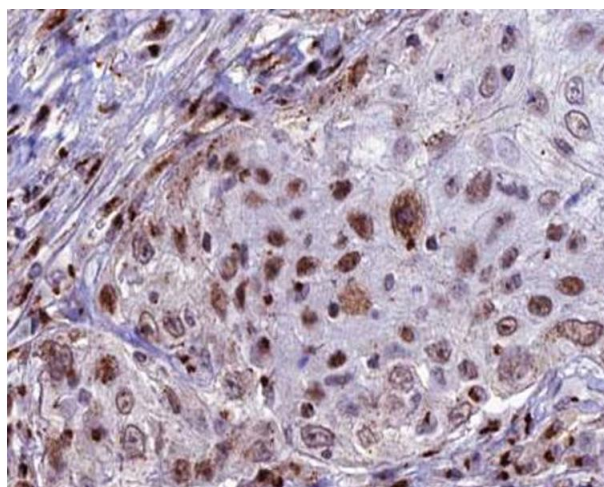
Handling

| | |
|--------------------|--|
| Format: | Liquid |
| Concentration: | 1 mg/mL |
| Buffer: | Rabbit IgG in phosphate buffered saline , pH 7.4, 150 mM NaCl, 0.02 % sodium azide and 50 % glycerol. |
| Preservative: | Sodium azide |
| Precaution of Use: | This product contains Sodium azide: a POISONOUS AND HAZARDOUS SUBSTANCE which should be handled by trained staff only. |
| Storage: | -20 °C |
| Storage Comment: | Store at -20 °C. Stable for 12 months from date of receipt. |
| Expiry Date: | 12 months |



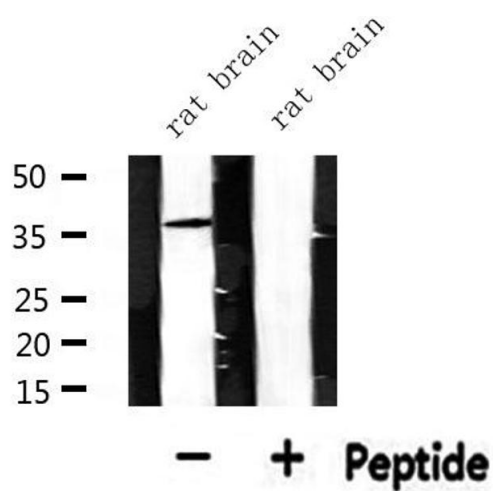
Western Blotting

Image 1. Western blot analysis on HepG2 cell lysate using CDKL4 Antibody, *The lane on the left is treated with the antigen-specific peptide.*



Immunohistochemistry

Image 2. ABIN6266946 at 1/100 staining human lung tissue sections by IHC-P. The tissue was formaldehyde fixed and a heat mediated antigen retrieval step in citrate buffer was performed. The tissue was then blocked and incubated with the antibody for 1.5 hours at 22°C. An HRP conjugated goat anti-rabbit antibody was used as the secondary.



Western Blotting

Image 3. Western blot analysis of extracts from rat brain, using CDKL4 Antibody.

Please check the [product details page](#) for more images. Overall 5 images are available for ABIN6260726.