



[Go to Product page](#)

Datasheet for ABIN6260730
anti-CDR1 antibody (N-Term)

2 Images

Overview

Quantity:	100 µL
Target:	CDR1
Binding Specificity:	N-Term
Reactivity:	Human, Mouse
Host:	Rabbit
Clonality:	Polyclonal
Conjugate:	This CDR1 antibody is un-conjugated
Application:	Western Blotting (WB), ELISA, Immunohistochemistry (IHC)

Product Details

Immunogen:	A synthesized peptide derived from human CDR1, corresponding to a region within N-terminal amino acids.
Isotype:	IgG
Specificity:	CDR1 Antibody detects endogenous levels of total CDR1.
Purification:	The antiserum was purified by peptide affinity chromatography using SulfoLink™ Coupling Resin (Thermo Fisher Scientific).

Target Details

Target:	CDR1
Alternative Name:	CDR1 (CDR1 Products)

Target Details

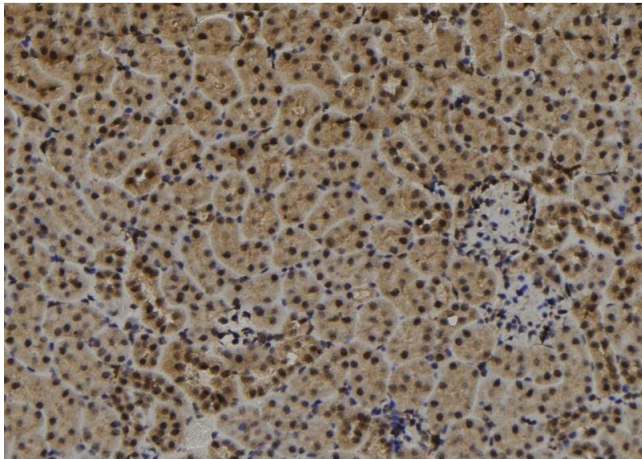
Background:	Description: Autoantibodies against CDR1 are found in patients with paraneoplastic cerebellar degeneration. Gene: CDR1
Molecular Weight:	31 kDa
Gene ID:	1038
UniProt:	P51861

Application Details

Application Notes:	WB 1:1000-3000, IHC 1:200, ELISA(peptide) 1:20000-1:40000
Restrictions:	For Research Use only

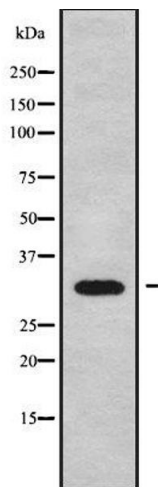
Handling

Format:	Liquid
Concentration:	1 mg/mL
Buffer:	Rabbit IgG in phosphate buffered saline , pH 7.4, 150 mM NaCl, 0.02 % sodium azide and 50 % glycerol.
Preservative:	Sodium azide
Precaution of Use:	This product contains Sodium azide: a POISONOUS AND HAZARDOUS SUBSTANCE which should be handled by trained staff only.
Storage:	-20 °C
Storage Comment:	Store at -20 °C. Stable for 12 months from date of receipt.
Expiry Date:	12 months



Immunohistochemistry

Image 1. ABIN6279282 at 1/100 staining Mouse kidney tissue by IHC-P. The sample was formaldehyde fixed and a heat mediated antigen retrieval step in citrate buffer was performed. The sample was then blocked and incubated with the antibody for 1.5 hours at 22°C. An HRP conjugated goat anti-rabbit antibody was used as the secondary



Western Blotting

Image 2. Western blot analysis of CDR1 using RAW264.7 whole cell lysates