



[Go to Product page](#)

Datasheet for ABIN6260737
anti-CEACAM16 antibody (Internal Region)

3 Images

Overview

Quantity:	100 µL
Target:	CEACAM16
Binding Specificity:	Internal Region
Reactivity:	Human, Mouse
Host:	Rabbit
Clonality:	Polyclonal
Conjugate:	This CEACAM16 antibody is un-conjugated
Application:	ELISA, Western Blotting (WB), Immunohistochemistry (IHC)

Product Details

Immunogen:	A synthesized peptide derived from human CEACAM16, corresponding to a region within the internal amino acids.
Isotype:	IgG
Specificity:	CEACAM16 Antibody detects endogenous levels of total CEACAM16.
Predicted Reactivity:	Pig,Bovine,Horse,Sheep,Rabbit,Dog
Purification:	The antiserum was purified by peptide affinity chromatography using SulfoLink™ Coupling Resin (Thermo Fisher Scientific).

Target Details

Target:	CEACAM16
---------	----------

Target Details

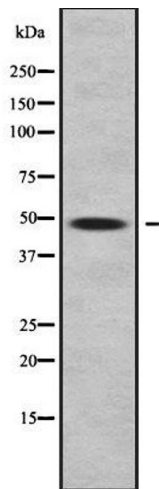
Alternative Name:	CEACAM16 (CEACAM16 Products)
Background:	Description: Required for proper hearing, it may play a role in maintaining the integrity of the tectorial membrane. Gene: CEACAM16
Molecular Weight:	46 kDa
Gene ID:	388551
UniProt:	Q2WEN9
Pathways:	Sensory Perception of Sound

Application Details

Application Notes:	WB 1:1000-3000, IHC 1:200, ELISA(peptide) 1:20000-1:40000
Restrictions:	For Research Use only

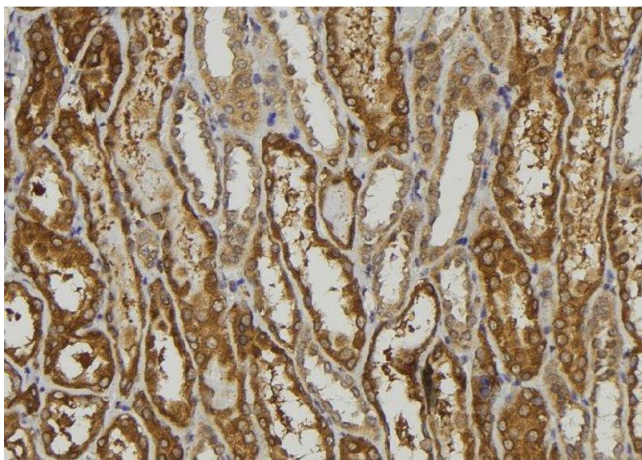
Handling

Format:	Liquid
Concentration:	1 mg/mL
Buffer:	Rabbit IgG in phosphate buffered saline , pH 7.4, 150 mM NaCl, 0.02 % sodium azide and 50 % glycerol.
Preservative:	Sodium azide
Precaution of Use:	This product contains Sodium azide: a POISONOUS AND HAZARDOUS SUBSTANCE which should be handled by trained staff only.
Storage:	-20 °C
Storage Comment:	Store at -20 °C. Stable for 12 months from date of receipt.
Expiry Date:	12 months



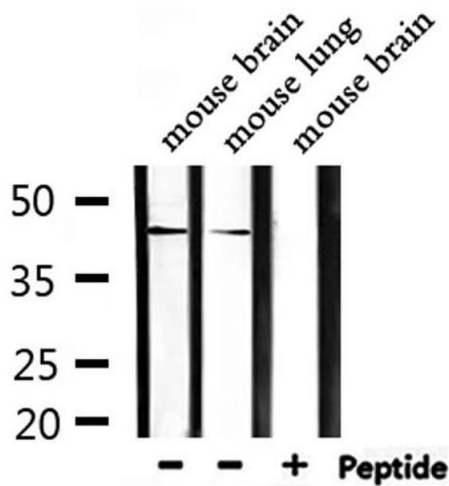
Western Blotting

Image 1. Western blot analysis of CEACAM16 using COLO205 whole cell lysates



Immunohistochemistry

Image 2. ABIN6279257 at 1/100 staining Mouse kidney tissue by IHC-P. The sample was formaldehyde fixed and a heat mediated antigen retrieval step in citrate buffer was performed. The sample was then blocked and incubated with the antibody for 1.5 hours at 22°C. An HRP conjugated goat anti-rabbit antibody was used as the secondary



Western Blotting

Image 3. Western blot analysis of extracts from mouse brain, mouse lung, using CEACAM16 Antibody.