

Datasheet for ABIN6260754  
**anti-CENPF antibody (C-Term)**[Go to Product page](#)

## 2 Images

## Overview

|                      |  |
|----------------------|--|
| Quantity:            | 100 µL   |
| Target:              | CENPF  |
| Binding Specificity: | C-Term   |
| Reactivity:          | Human, Mouse   |
| Host:                | Rabbit   |
| Clonality:           | Polyclonal   |
| Conjugate:           | This CENPF antibody is un-conjugated                     |
| Application:         | ELISA, Immunohistochemistry (IHC), Western Blotting (WB) |

## Product Details

|                       |   |
|-----------------------|---|
| Immunogen:            | A synthesized peptide derived from human CENPF, corresponding to a region within C-terminal amino acids.                  |
| Isotype:              | IgG   |
| Specificity:          | CENPF Antibody detects endogenous levels of total CENPF.  |
| Predicted Reactivity: | Pig   |
| Purification:         | The antiserum was purified by peptide affinity chromatography using SulfoLink™ Coupling Resin (Thermo Fisher Scientific). |

## Target Details

|         |       |
|---------|-------|
| Target: | CENPF |
|---------|-------|

## Target Details

|                   |  |
|-------------------|--|
| Alternative Name: | CENPF ( <a href="#">CENPF Products</a> )   |
| Background:       | <p>Description: Required for kinetochore function and chromosome segregation in mitosis. Required for kinetochore localization of dynein, LIS1, NDE1 and NDEL1. Regulates recycling of the plasma membrane by acting as a link between recycling vesicles and the microtubule network through its association with STX4 and SNAP25. Acts as a potential inhibitor of pocket protein-mediated cellular processes during development by regulating the activity of RB proteins during cell division and proliferation. May play a regulatory or permissive role in the normal embryonic cardiomyocyte cell cycle and in promoting continued mitosis in transformed, abnormally dividing neonatal cardiomyocytes. Interaction with RB directs embryonic stem cells toward a cardiac lineage. Involved in the regulation of DNA synthesis and hence cell cycle progression, via its C-terminus. Has a potential role regulating skeletal myogenesis and in cell differentiation in embryogenesis. Involved in dendritic cell regulation of T-cell immunity against chlamydia.</p> <p>Gene: CENPF</p> |
| Molecular Weight: | 367 kDa  |
| Gene ID:          | 1063   |
| UniProt:          | <a href="#">P49454</a>   |
| Pathways:         | <a href="#">Chromatin Binding</a> , <a href="#">M Phase</a> , <a href="#">SARS-CoV-2 Protein Interactome</a> , <a href="#">The Global Phosphorylation Landscape of SARS-CoV-2 Infection</a>  |

## Application Details

|                    |   |
|--------------------|---|
| Application Notes: | WB 1:500-1:2000, IHC 1:50-1:200, ELISA(peptide) 1:20000-1:40000 |
| Restrictions:      | For Research Use only   |

## Handling

|                    |  |
|--------------------|--|
| Format:            | Liquid   |
| Concentration:     | 1 mg/mL  |
| Buffer:            | Rabbit IgG in phosphate buffered saline, pH 7.4, 150 mM NaCl, 0.02 % sodium azide and 50 % glycerol. |
| Preservative:      | Sodium azide   |
| Precaution of Use: | This product contains Sodium azide: a POISONOUS AND HAZARDOUS SUBSTANCE which                        |

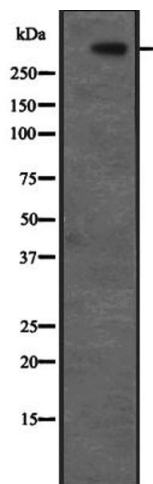
## Handling

should be handled by trained staff only.

Storage: -20 °C

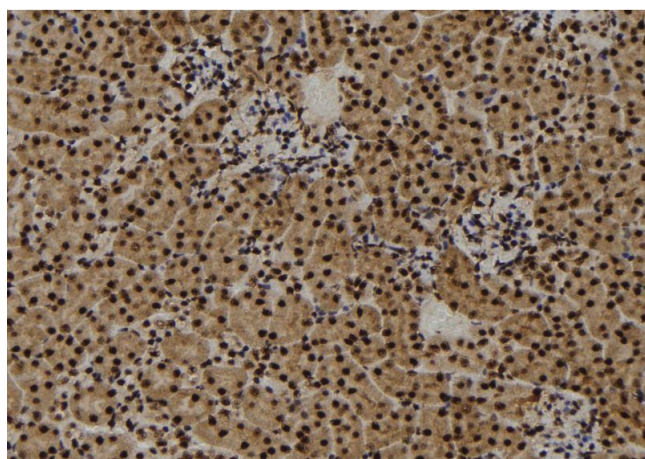
Expiry Date: 12 months

## Images



### Western Blotting

**Image 1.** Western blot analysis of CENPF expression in HeLa cell lysate. The lane on the left is treated with the antigen-specific peptide.



### Immunohistochemistry

**Image 2.** ABIN6273457 at 1/100 staining Mouse kidney tissue by IHC-P. The sample was formaldehyde fixed and a heat mediated antigen retrieval step in citrate buffer was performed. The sample was then blocked and incubated with the antibody for 1.5 hours at 22°C. An HRP conjugated goat anti-rabbit antibody was used as the secondary.