

Datasheet for ABIN6260763
anti-Centriolin antibody

4 Images

[Go to Product page](#)

Overview

Quantity:	100 µL
Target:	Centriolin (CNTRL)
Reactivity:	Human, Mouse, Rat
Host:	Rabbit
Clonality:	Polyclonal
Conjugate:	This Centriolin antibody is un-conjugated
Application:	Western Blotting (WB), Immunohistochemistry (IHC), ELISA

Product Details

Immunogen:	A synthesized peptide derived from human CEP110
Isotype:	IgG
Specificity:	CEP110 Antibody detects endogenous levels of total CEP110
Cross-Reactivity:	Human, Mouse (Murine), Rat (Rattus)
Purification:	The antiserum was purified by peptide affinity chromatography using SulfoLink™ Coupling Resin (Thermo Fisher Scientific).

Target Details

Target:	Centriolin (CNTRL)
Alternative Name:	CEP110 (CNTRL Products)
Background:	Description: Necessary for centrosome duplication at different stages of procentriole

Target Details

formation. Acts as a key negative regulator of ciliogenesis in collaboration with CEP97 by capping the mother centriole thereby preventing cilia formation (PubMed:17719545 PubMed:17681131, PubMed:23486064). Also involved in promoting ciliogenesis. May play a role in the assembly of the mother centriole subdistal appendages (SDA) thereby effecting the fusion of recycling endosomes to basal bodies during cilia formation (By similarity). Required for correct spindle formation and has a role in regulating cytokinesis and genome stability via cooperation with CALM1 and CETN2 (PubMed:16760425).

Gene: CCP110

Molecular Weight: 113kDa

Gene ID: 9738

UniProt: [O43303](#)

Pathways: [M Phase](#), [SARS-CoV-2 Protein Interactome](#)

Application Details

Application Notes: WB 1:1000-3000 IHC 1:200

Restrictions: For Research Use only

Handling

Format: Liquid

Concentration: 1 mg/mL

Buffer: Rabbit IgG in phosphate buffered saline , pH 7.4, 150 mM NaCl, 0.02 % sodium azide and 50 % glycerol.

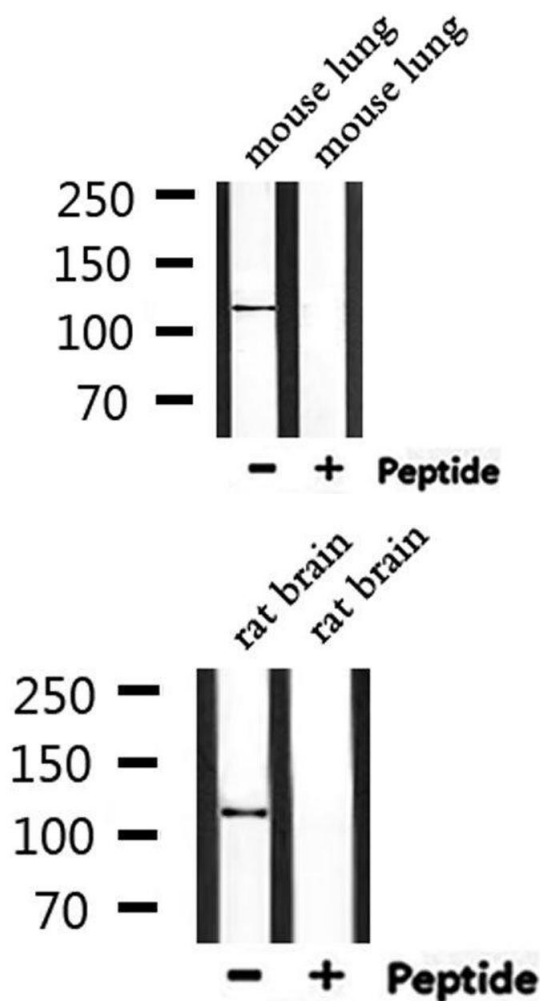
Preservative: Sodium azide

Precaution of Use: This product contains Sodium azide: a POISONOUS AND HAZARDOUS SUBSTANCE which should be handled by trained staff only.

Storage: -20 °C

Storage Comment: Store at -20 °C.Stable for 12 months from date of receipt

Expiry Date: 12 months

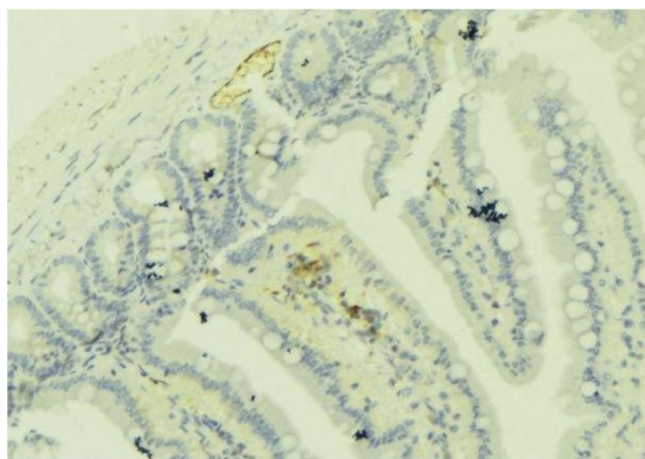


Western Blotting

Image 1. Western blot analysis of extracts from mouse lung, using CEP110 Antibody.

Western Blotting

Image 2. Western blot analysis of extracts from rat brain, using CEP110 Antibody.



Immunohistochemistry

Image 3. ABIN6279274 at 1/100 staining Mouse colon tissue by IHC-P. The sample was formaldehyde fixed and a heat mediated antigen retrieval step in citrate buffer was performed. The sample was then blocked and incubated with the antibody for 1.5 hours at 22°C. An HRP conjugated goat anti-rabbit antibody was used as the secondary

Please check the [product details page](#) for more images. Overall 4 images are available for ABIN6260763.