

Datasheet for ABIN6260764  
**anti-CEP152 antibody (C-Term)**[Go to Product page](#)

## 1 Image

## Overview

Quantity:	100 µL
Target:	CEP152
Binding Specificity:	C-Term
Reactivity:	Human
Host:	Rabbit
Clonality:	Polyclonal
Conjugate:	This CEP152 antibody is un-conjugated
Application:	ELISA, Western Blotting (WB), Immunofluorescence (IF), Immunocytochemistry (ICC)

## Product Details

Immunogen:	A synthesized peptide derived from human CEP152, corresponding to a region within C-terminal amino acids.
Isotype:	IgG
Specificity:	CEP152 Antibody detects endogenous levels of total CEP152.
Predicted Reactivity:	Pig,Bovine,Horse,Sheep,Dog
Purification:	The antiserum was purified by peptide affinity chromatography using SulfoLink™ Coupling Resin (Thermo Fisher Scientific).

## Target Details

Target:	CEP152
---------	--------

## Target Details

Alternative Name:	CEP152 ( <a href="#">CEP152 Products</a> )
Background:	<p>Description: Necessary for centrosome duplication, the function seems also to involve CEP63, CDK5RAP2 and WDR62 through a stepwise assembled complex at the centrosome that recruits CDK2 required for centriole duplication (PubMed:26297806). Acts as a molecular scaffold facilitating the interaction of PLK4 and CENPJ, 2 Molecules involved in centriole formation (PubMed:21059844, PubMed:20852615). Proposed to snatch PLK4 away from PLK4:CEP92 complexes in early G1 daughter centriole and to reposition PLK4 at the outer boundary of a newly forming CEP152 ring structure (PubMed:24997597). Also plays a key role in deuterosome-mediated centriole amplification in multiciliated that can generate more than 100 centrioles (By similarity). Overexpression of CEP152 can drive amplification of centrioles (PubMed:20852615).</p> <p>Gene: CEP152</p>
Molecular Weight:	140kDa
Gene ID:	22995
UniProt:	<a href="#">O94986</a>
Pathways:	<a href="#">M Phase</a>

## Application Details

Application Notes:	WB 1:1000, IF/ICC 1:100-1:500, ELISA(peptide) 1:20000-1:40000
Restrictions:	For Research Use only

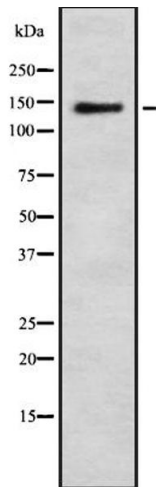
## Handling

Format:	Liquid
Concentration:	1 mg/mL
Buffer:	Rabbit IgG in phosphate buffered saline , pH 7.4, 150 mM NaCl, 0.02 % sodium azide and 50 % glycerol.
Preservative:	Sodium azide
Precaution of Use:	This product contains Sodium azide: a POISONOUS AND HAZARDOUS SUBSTANCE which should be handled by trained staff only.
Storage:	-20 °C
Storage Comment:	Store at -20 °C. Stable for 12 months from date of receipt.

## Handling

Expiry Date: 12 months

## Images



### Western Blotting

**Image 1.** Western blot analysis of CEP152 using Jurkat whole cell lysates