

Datasheet for ABIN6260779

**anti-CFHR3 antibody**

## 2 Images

[Go to Product page](#)

## Overview

Quantity:	100 µL
Target:	CFHR3
Reactivity:	Human, Rat
Host:	Rabbit
Clonality:	Polyclonal
Conjugate:	This CFHR3 antibody is un-conjugated
Application:	Western Blotting (WB), Immunohistochemistry (IHC)

## Product Details

Immunogen:	A synthesized peptide derived from human CFHR3.
Isotype:	IgG
Specificity:	CFHR3 antibody detects endogenous levels of CFHR3.
Cross-Reactivity:	Human, Rat (Rattus)
Purification:	The antiserum was purified by peptide affinity chromatography using SulfoLink™ Coupling Resin (Thermo Fisher Scientific).

## Target Details

Target:	CFHR3
Alternative Name:	CFHR3 ( <a href="#">CFHR3 Products</a> )
Background:	Description: Might be involved in complement regulation.

## Target Details

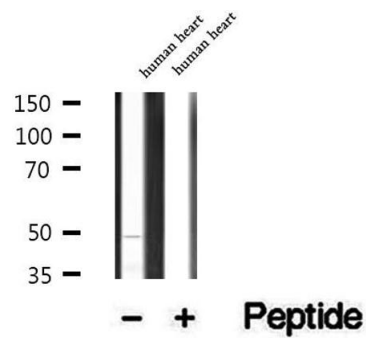
	Gene: CFHR3
Molecular Weight:	45-56 kDa
Gene ID:	10878
UniProt:	<a href="#">Q02985</a>

## Application Details

Application Notes:	WB 1:500-1:2000, IHC 1:50-1:200
Restrictions:	For Research Use only

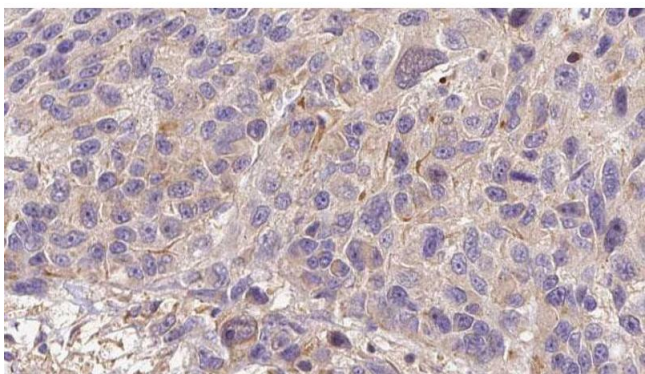
## Handling

Format:	Liquid
Concentration:	1 mg/mL
Buffer:	Rabbit IgG in phosphate buffered saline , pH 7.4, 150 mM NaCl, 0.02 % sodium azide and 50 % glycerol.
Preservative:	Sodium azide
Precaution of Use:	This product contains Sodium azide: a POISONOUS AND HAZARDOUS SUBSTANCE which should be handled by trained staff only.
Storage:	-20 °C
Storage Comment:	Store at -20 °C.Stable for 12 months from date of receipt
Expiry Date:	12 months



### Western Blotting

**Image 1.** Western blot analysis of extracts of human heart tissue, using CFHR3 antibody.



### Immunohistochemistry

**Image 2.** ABIN6273207 at 1/100 staining Human melanoma tissue by IHC-P. The sample was formaldehyde fixed and a heat mediated antigen retrieval step in citrate buffer was performed. The sample was then blocked and incubated with the antibody for 1.5 hours at 22°C. An HRP conjugated goat anti-rabbit antibody was used as the secondary.