



Datasheet for ABIN6260789
anti-CHCHD2 antibody (Internal Region)



[Go to Product page](#)

3 Images

Overview

Quantity:	100 µL
Target:	CHCHD2
Binding Specificity:	Internal Region
Reactivity:	Human, Mouse, Rat
Host:	Rabbit
Clonality:	Polyclonal
Conjugate:	This CHCHD2 antibody is un-conjugated
Application:	Western Blotting (WB), Immunohistochemistry (IHC)

Product Details

Immunogen:	A synthesized peptide derived from human CHCHD2, corresponding to a region within the internal amino acids.
Isotype:	IgG
Specificity:	CHCHD2 Antibody detects endogenous levels of total CHCHD2.
Predicted Reactivity:	Pig,Zebrafish,Horse,Rabbit,Dog,Chicken,Xenopus
Purification:	The antiserum was purified by peptide affinity chromatography using SulfoLink™ Coupling Resin (Thermo Fisher Scientific).

Target Details

Target:	CHCHD2
---------	--------

Target Details

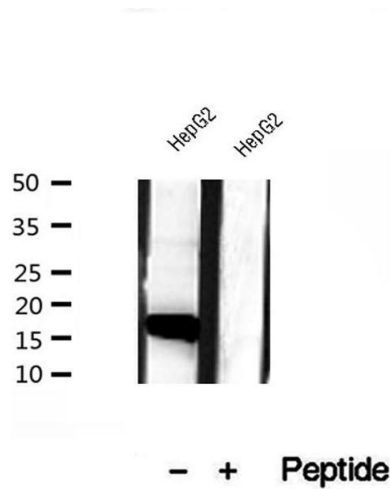
Alternative Name:	CHCHD2 (CHCHD2 Products)
Background:	Description: Transcription factor. Binds to the oxygen responsive element of COX4I2 and activates its transcription under hypoxia conditions (4 % oxygen), as well as normoxia conditions (20 % oxygen) (PubMed:23303788). Gene: CHCHD2
Molecular Weight:	16-18 kDa
Gene ID:	51142
UniProt:	Q9Y6H1

Application Details

Application Notes:	WB 1:500-1:2000, IHC 1:50-1:200
Restrictions:	For Research Use only

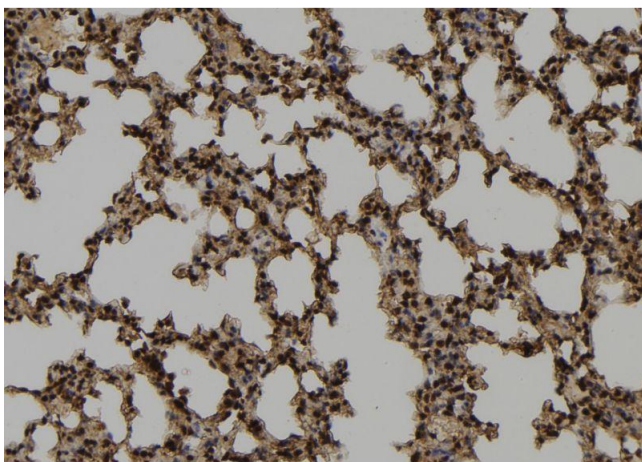
Handling

Format:	Liquid
Concentration:	1 mg/mL
Buffer:	Rabbit IgG in phosphate buffered saline , pH 7.4, 150 mM NaCl, 0.02 % sodium azide and 50 % glycerol.
Preservative:	Sodium azide
Precaution of Use:	This product contains Sodium azide: a POISONOUS AND HAZARDOUS SUBSTANCE which should be handled by trained staff only.
Storage:	-20 °C
Storage Comment:	Store at -20 °C. Stable for 12 months from date of receipt.
Expiry Date:	12 months



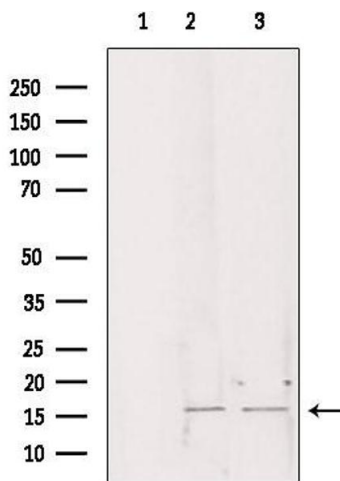
Western Blotting

Image 1. Western blot analysis of extracts of HepG2 cells, using CHCHD2 antibody.



Immunohistochemistry

Image 2. ABIN6272910 at 1/100 staining Mouse lung tissue by IHC-P. The sample was formaldehyde fixed and a heat mediated antigen retrieval step in citrate buffer was performed. The sample was then blocked and incubated with the antibody for 1.5 hours at 22°C. An HRP conjugated goat anti-rabbit antibody was used as the secondary.



Western Blotting

Image 3. Western blot analysis of extracts from various samples, using CHCHD2 antibody. Lane 1: 293 treated with blocking peptide. Lane 2: 293; Lane 3: mouse brain;