

Datasheet for ABIN6260792  
**anti-CHCHD6 antibody (Internal Region)**[Go to Product page](#)

## 3 Images

## Overview

Quantity:	100 µL
Target:	CHCHD6
Binding Specificity:	Internal Region
Reactivity:	Human, Rat
Host:	Rabbit
Clonality:	Polyclonal
Conjugate:	This CHCHD6 antibody is un-conjugated
Application:	Western Blotting (WB), Immunohistochemistry (IHC)

## Product Details

Immunogen:	A synthesized peptide derived from human CHCHD6, corresponding to a region within the internal amino acids.
Isotype:	IgG
Specificity:	CHCHD6 Antibody detects endogenous levels of total CHCHD6.
Predicted Reactivity:	Pig,Bovine,Rabbit
Purification:	The antiserum was purified by peptide affinity chromatography using SulfoLink™ Coupling Resin (Thermo Fisher Scientific).

## Target Details

Target:	CHCHD6
---------	--------

## Target Details

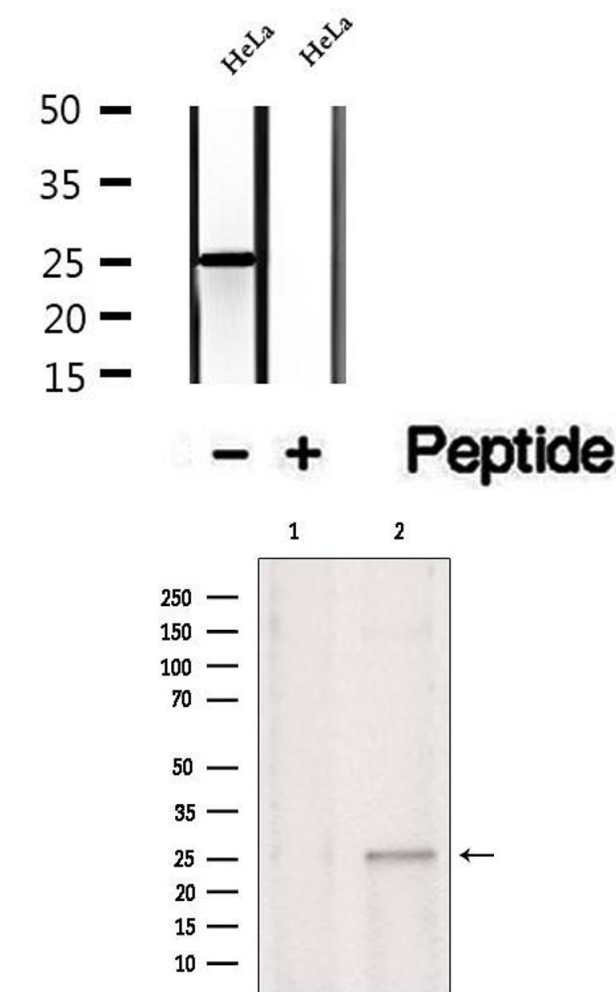
Alternative Name:	CHCHD6 ( <a href="#">CHCHD6 Products</a> )
Background:	Description: Component of the MICOS complex, a large protein complex of the mitochondrial inner membrane that plays crucial roles in the maintenance of crista junctions, inner membrane architecture, and formation of contact sites to the outer membrane.  Gene: CHCHD6
Molecular Weight:	26-29 kDa
Gene ID:	84303
UniProt:	<a href="#">Q9BRQ6</a>

## Application Details

Application Notes:	WB 1:500-1:2000, IHC 1:50-1:200
Restrictions:	For Research Use only

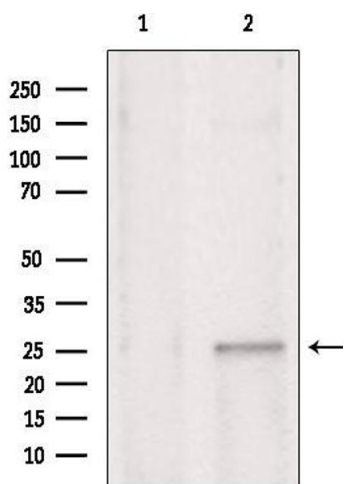
## Handling

Format:	Liquid
Concentration:	1 mg/mL
Buffer:	Rabbit IgG in phosphate buffered saline , pH 7.4, 150 mM NaCl, 0.02 % sodium azide and 50 % glycerol.
Preservative:	Sodium azide
Precaution of Use:	This product contains Sodium azide: a POISONOUS AND HAZARDOUS SUBSTANCE which should be handled by trained staff only.
Storage:	-20 °C
Storage Comment:	Store at -20 °C. Stable for 12 months from date of receipt.
Expiry Date:	12 months



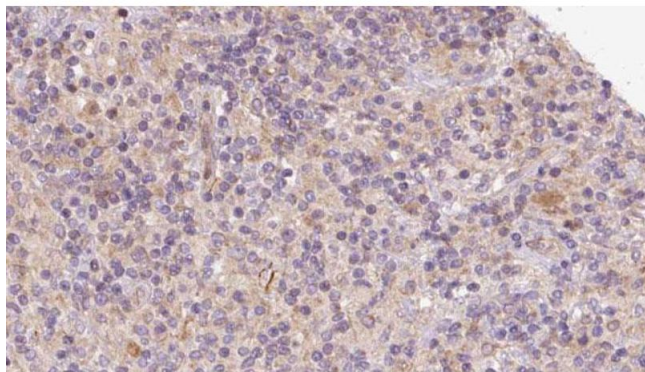
Western Blotting

**Image 1.** Western blot analysis of extracts of HeLa cells, using CHCHD6 antibody.



Western Blotting

**Image 2.** Western blot analysis of extracts from rat brain, using CHCHD6 antibody. Lane 1 was treated with the blocking peptide.



Immunohistochemistry

**Image 3.** ABIN6273099 at 1/100 staining Human lymph cancer tissue by IHC-P. The sample was formaldehyde fixed and a heat mediated antigen retrieval step in citrate buffer was performed. The sample was then blocked and incubated with the antibody for 1.5 hours at 22°C. An HRP conjugated goat anti-rabbit antibody was used as the secondary.