



[Go to Product page](#)

Datasheet for ABIN626080

## anti-KAP1 antibody (AA 379-524)

### 2 Images

#### Overview

Quantity:	50 µg
Target:	KAP1 (TRIM28)
Binding Specificity:	AA 379-524
Reactivity:	Human, Mouse, Rat
Host:	Mouse
Clonality:	Monoclonal
Application:	Western Blotting (WB), ELISA, Immunohistochemistry (IHC), Immunofluorescence (IF), Immunohistochemistry (Paraffin-embedded Sections) (IHC (p))

#### Product Details

Brand:	IHC-plus™
Immunogen:	TRIM28 (AAH04978, 379 a.a. ~ 524 a.a) partial recombinant protein with GST tag. MW of the GST tag alone is 26 KDa.  Type of Immunogen: Recombinant protein
Clone:	4E6
Isotype:	IgG2b kappa
Specificity:	Human TRIM28
Purification:	Purified from ascites by Protein A

## Target Details

---

Target:	KAP1 (TRIM28)
Alternative Name:	TRIM28 / KAP-1 ( <a href="#">TRIM28 Products</a> )
Background:	Name/Gene ID: TRIM28 Subfamily: TIF1 Family: Tripartite Motif  Synonyms: TRIM28, E3 SUMO-protein ligase TRIM28, KRIP-1, Nuclear corepressor KAP-1, KAP-1, KAP1, KRAB-interacting protein 1, TIF1B, RNF96, TIF1-beta, TIF1beta, Tripartite motif-containing 28, KRAB-associated protein 1, RING finger protein 96, TF1B, Tif1beta zinc finger protein, Tripartite motif containing 28
Gene ID:	10155
UniProt:	<a href="#">Q13263</a>
Pathways:	<a href="#">Hedgehog Signaling, Positive Regulation of Response to DNA Damage Stimulus</a>

## Application Details

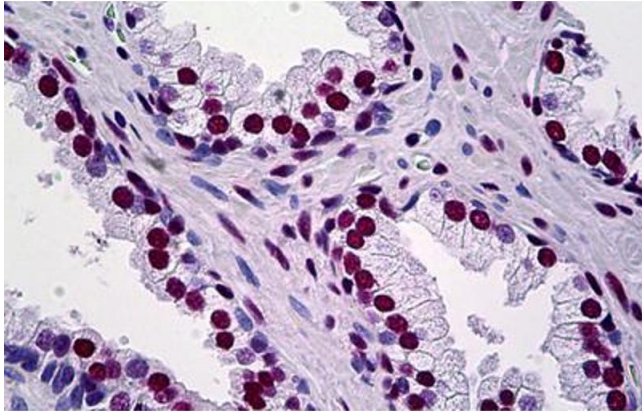
---

Application Notes:	Approved: ELISA, IF (10 µg/mL), IHC, IHC-P (5 µg/mL), WB  Usage: Immunohistochemistry: Formalin-fixed paraffin-embedded sections. RNAi Knockdown: Antibody validated. Western Blot: Cell lysate, Cell lysate, Cell lysate, Transfected lysate, Recombinant protein.
Comment:	Target Species of Antibody: Human
Restrictions:	For Research Use only

## Handling

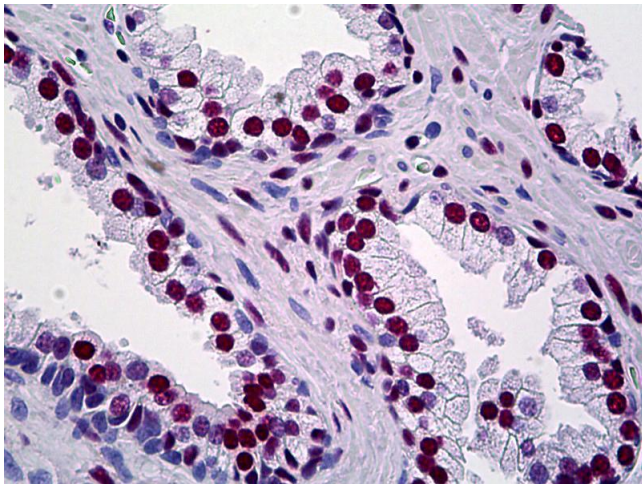
---

Format:	Liquid
Concentration:	Lot specific
Buffer:	PBS, pH 7.4
Handling Advice:	avoid freeze thaw cycles.
Storage:	4 °C,-20 °C
Storage Comment:	Short term 4°C, long term aliquot and store at -20°C, avoid freeze-thaw cycles.



### Immunohistochemistry (Formalin-fixed Paraffin-embedded Sections)

**Image 1.** Human Prostate: Formalin-Fixed, Paraffin-Embedded (FFPE)



### Immunohistochemistry

**Image 2.** Anti-TRIM28 antibody IHC of human prostate. Immunohistochemistry of formalin-fixed, paraffin-embedded tissue after heat-induced antigen retrieval. Antibody concentration 5 ug/ml.