

Datasheet for ABIN6260828
anti-CHRNA antibody (N-Term)[Go to Product page](#)

4 Images

Overview

Quantity:	100 µL
Target:	CHRNA
Binding Specificity:	N-Term
Reactivity:	Human, Rat, Mouse
Host:	Rabbit
Clonality:	Polyclonal
Conjugate:	This CHRNA antibody is un-conjugated
Application:	Western Blotting (WB), ELISA, Immunohistochemistry (IHC)

Product Details

Immunogen:	A synthesized peptide derived from human CHRNA, corresponding to a region within N-terminal amino acids.
Isotype:	IgG
Specificity:	CHRNA Antibody detects endogenous levels of total CHRNA.
Predicted Reactivity:	Pig,Bovine,Horse,Sheep,Rabbit,Dog
Purification:	The antiserum was purified by peptide affinity chromatography using SulfoLink™ Coupling Resin (Thermo Fisher Scientific).

Target Details

Target:	CHRNA
---------	-------

Target Details

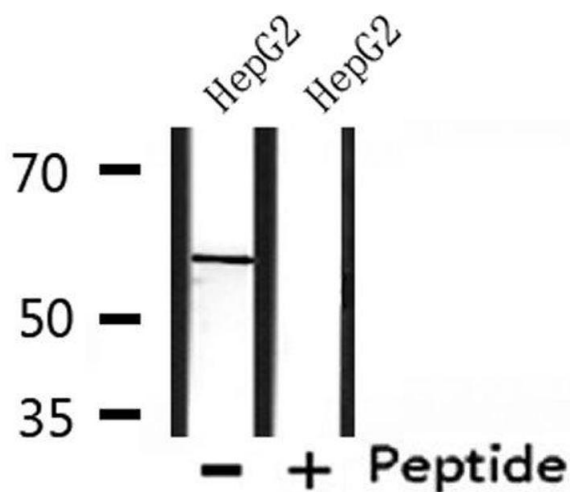
Alternative Name:	CHRNA3 (CHRNA3 Products)
Background:	Description: After binding acetylcholine, the AChR responds by an extensive change in conformation that affects all subunits and leads to opening of an ion-conducting channel across the plasma membrane. Gene: CHRNA3
Molecular Weight:	58 kDa
Gene ID:	1146
UniProt:	P07510

Application Details

Application Notes:	WB 1:1000-3000, IHC 1:200, ELISA(peptide) 1:20000-1:40000
Restrictions:	For Research Use only

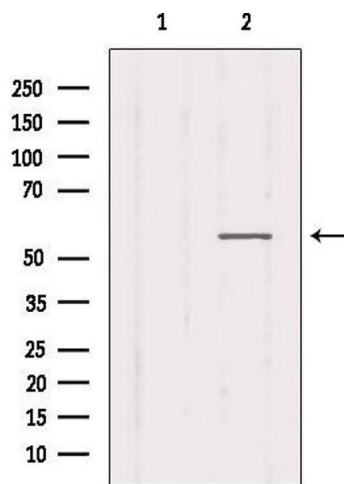
Handling

Format:	Liquid
Concentration:	1 mg/mL
Buffer:	Rabbit IgG in phosphate buffered saline , pH 7.4, 150 mM NaCl, 0.02 % sodium azide and 50 % glycerol.
Preservative:	Sodium azide
Precaution of Use:	This product contains Sodium azide: a POISONOUS AND HAZARDOUS SUBSTANCE which should be handled by trained staff only.
Storage:	-20 °C
Storage Comment:	Store at -20 °C. Stable for 12 months from date of receipt.
Expiry Date:	12 months



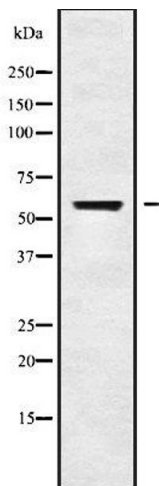
Western Blotting

Image 1. Western blot analysis of extracts from HepG2, using CHRNG Antibody.



Western Blotting

Image 2. Western blot analysis of extracts from Mouse muscle, using CHRNG Antibody. Lane 1 was treated with the blocking peptide.



Western Blotting

Image 3. Western blot analysis of CHRNG using HT29 whole cell lysates

Please check the [product details page](#) for more images. Overall 4 images are available for ABIN6260828.