



[Go to Product page](#)

Datasheet for ABIN6260836
anti-CIB2 antibody (Internal Region)

2 Images

Overview

Quantity:	100 µL
Target:	CIB2
Binding Specificity:	Internal Region
Reactivity:	Human, Mouse, Rat
Host:	Rabbit
Clonality:	Polyclonal
Conjugate:	This CIB2 antibody is un-conjugated
Application:	ELISA, Immunohistochemistry (IHC), Western Blotting (WB), Immunofluorescence (IF), Immunocytochemistry (ICC)

Product Details

Immunogen:	A synthesized peptide derived from human CIB2, corresponding to a region within the internal amino acids.
Isotype:	IgG
Specificity:	CIB2 Antibody detects endogenous levels of total CIB2.
Predicted Reactivity:	Zebrafish,Bovine,Horse,Sheep,Rabbit,Dog,Chicken
Purification:	The antiserum was purified by peptide affinity chromatography using SulfoLink™ Coupling Resin (Thermo Fisher Scientific).

Target Details

Target:	CIB2
---------	------

Target Details

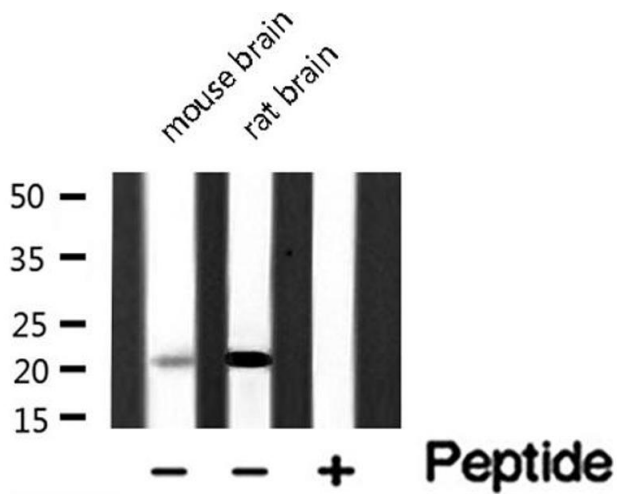
Alternative Name:	CIB2 (CIB2 Products)
Background:	Description: Calcium-binding protein critical for proper photoreceptor cell maintenance and function. Plays a role in intracellular calcium homeostasis by decreasing ATP-induced calcium release (PubMed:23023331, PubMed:26173970, PubMed:26426422). May be involved in the mechanotransduction process (By similarity). Gene: CIB2
Molecular Weight:	21kDa
Gene ID:	10518
UniProt:	O75838

Application Details

Application Notes:	IHC 1:50-1:200, WB 1:1000, IF/ICC 1:100-1:500, ELISA(peptide) 1:20000-1:40000
Restrictions:	For Research Use only

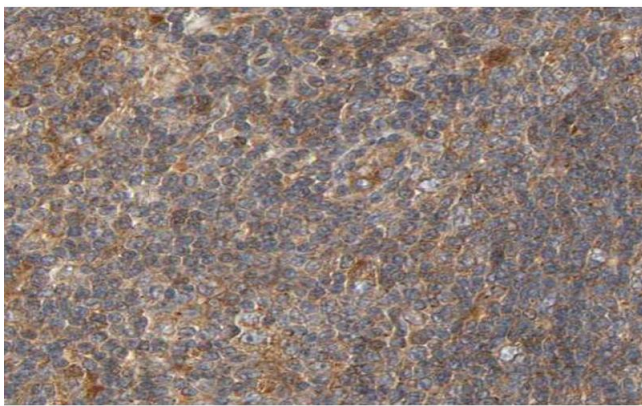
Handling

Format:	Liquid
Concentration:	1 mg/mL
Buffer:	Rabbit IgG in phosphate buffered saline , pH 7.4, 150 mM NaCl, 0.02 % sodium azide and 50 % glycerol.
Preservative:	Sodium azide
Precaution of Use:	This product contains Sodium azide: a POISONOUS AND HAZARDOUS SUBSTANCE which should be handled by trained staff only.
Storage:	-20 °C
Storage Comment:	Store at -20 °C. Stable for 12 months from date of receipt.
Expiry Date:	12 months



Western Blotting

Image 1. Western blot analysis of CIB2 Antibody expression in Various tissues lysates. The lane on the right is treated with the antigen-specific peptide.



Immunohistochemistry

Image 2. ABIN6266727 at 1/100 staining human lymph node tissue sections by IHC-P. The tissue was formaldehyde fixed and a heat mediated antigen retrieval step in citrate buffer was performed. The tissue was then blocked and incubated with the antibody for 1.5 hours at 22°C. An HRP conjugated goat anti-rabbit antibody was used as the secondary.