

Datasheet for ABIN6260845  
**anti-CISH antibody (Internal Region)**[Go to Product page](#)

## 1 Image

## Overview

Quantity:	100 µL
Target:	CISH
Binding Specificity:	Internal Region
Reactivity:	Human, Mouse, Rat
Host:	Rabbit
Clonality:	Polyclonal
Conjugate:	This CISH antibody is un-conjugated
Application:	Western Blotting (WB), ELISA

## Product Details

Immunogen:	A synthesized peptide derived from human CISH, corresponding to a region within the internal amino acids.
Isotype:	IgG
Specificity:	CISH Antibody detects endogenous levels of total CISH.
Predicted Reactivity:	Bovine, Sheep, Rabbit, Dog
Purification:	The antiserum was purified by peptide affinity chromatography using SulfoLink™ Coupling Resin (Thermo Fisher Scientific).

## Target Details

Target:	CISH
---------	------

## Target Details

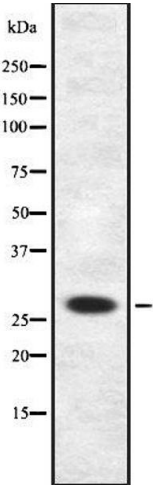
Alternative Name:	CISH ( <a href="#">CISH Products</a> )
Background:	<p>Description: SOCS family proteins form part of a classical negative feedback system that regulates cytokine signal transduction. CIS is involved in the negative regulation of cytokines that signal through the JAK-STAT5 pathway such as erythropoietin, prolactin and interleukin 3 (IL3) receptor. Inhibits STAT5 trans-activation by suppressing its tyrosine phosphorylation. May be a substrate-recognition component of a SCF-like ECS (Elongin BC-CUL2/5-SOCS-box protein) E3 ubiquitin-protein ligase complex which mediates the ubiquitination and subsequent proteasomal degradation of target proteins (By similarity).</p> <p>Gene: CISH</p>
Molecular Weight:	29kDa
Gene ID:	1154
UniProt:	<a href="#">Q9NSE2</a>
Pathways:	<a href="#">JAK-STAT Signaling</a> , <a href="#">Response to Growth Hormone Stimulus</a>

## Application Details

Application Notes:	WB 1:1000-3000, ELISA(peptide) 1:20000-1:40000
Restrictions:	For Research Use only

## Handling

Format:	Liquid
Concentration:	1 mg/mL
Buffer:	Rabbit IgG in phosphate buffered saline , pH 7.4, 150 mM NaCl, 0.02 % sodium azide and 50 % glycerol.
Preservative:	Sodium azide
Precaution of Use:	This product contains Sodium azide: a POISONOUS AND HAZARDOUS SUBSTANCE which should be handled by trained staff only.
Storage:	-20 °C
Storage Comment:	Store at -20 °C. Stable for 12 months from date of receipt.
Expiry Date:	12 months



Western Blotting

**Image 1.** Western blot analysis of CISH using Jurkat whole cell lysates