

Datasheet for ABIN6260848

anti-CITED4 antibody (Internal Region)[Go to Product page](#)**1** Image

Overview

Quantity:	100 µL
Target:	CITED4
Binding Specificity:	Internal Region
Reactivity:	Human, Mouse, Rat
Host:	Rabbit
Clonality:	Polyclonal
Conjugate:	This CITED4 antibody is un-conjugated
Application:	Western Blotting (WB), ELISA

Product Details

Immunogen:	A synthesized peptide derived from human CITED4, corresponding to a region within the internal amino acids.
Isotype:	IgG
Specificity:	CITED4 Antibody detects endogenous levels of total CITED4.
Predicted Reactivity:	Pig,Bovine,Rabbit
Purification:	The antiserum was purified by peptide affinity chromatography using SulfoLink™ Coupling Resin (Thermo Fisher Scientific).

Target Details

Target:	CITED4
---------	--------

Target Details

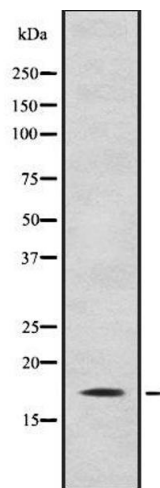
Alternative Name:	CITED4 (CITED4 Products)
Background:	<p>Description: Acts as transcriptional coactivator for TFAP2/AP-2. Enhances estrogen-dependent transactivation mediated by estrogen receptors. May function as an inhibitor of transactivation by HIF1A by disrupting HIF1A interaction with CREBBP. May be involved in regulation of gene expression during development and differentiation of blood cells, endothelial cells and mammary epithelial cells.</p> <p>Gene: CITED4</p>
Molecular Weight:	18 kDa
Gene ID:	163732
UniProt:	Q96RK1

Application Details

Application Notes:	WB 1:1000-3000, ELISA(peptide) 1:20000-1:40000
Restrictions:	For Research Use only

Handling

Format:	Liquid
Concentration:	1 mg/mL
Buffer:	Rabbit IgG in phosphate buffered saline , pH 7.4, 150 mM NaCl, 0.02 % sodium azide and 50 % glycerol.
Preservative:	Sodium azide
Precaution of Use:	This product contains Sodium azide: a POISONOUS AND HAZARDOUS SUBSTANCE which should be handled by trained staff only.
Storage:	-20 °C
Storage Comment:	Store at -20 °C. Stable for 12 months from date of receipt.
Expiry Date:	12 months



Western Blotting

Image 1. Western blot analysis of CITED4 using K562 whole cell lysates