

Datasheet for ABIN626087
anti-STAG2 antibody (AA 1130-1232)



[Go to Product page](#)

2 Images

Overview

Quantity:	50 µg
Target:	STAG2
Binding Specificity:	AA 1130-1232
Reactivity:	Human, Mouse
Host:	Mouse
Clonality:	Monoclonal
Application:	Western Blotting (WB), ELISA, Immunohistochemistry (IHC), Immunofluorescence (IF), Immunohistochemistry (Paraffin-embedded Sections) (IHC (p))

Product Details

Brand:	IHC-plus™
Immunogen:	STAG2 (NP_006594, 1130 a.a. ~ 1232 a.a) partial recombinant protein with GST tag. MW of the GST tag alone is 26 KDa. Type of Immunogen: Recombinant protein
Clone:	3C6
Isotype:	IgG1 kappa
Specificity:	Human Nuclear Protein SA-2
Purification:	Purified from ascites by Protein A

Target Details

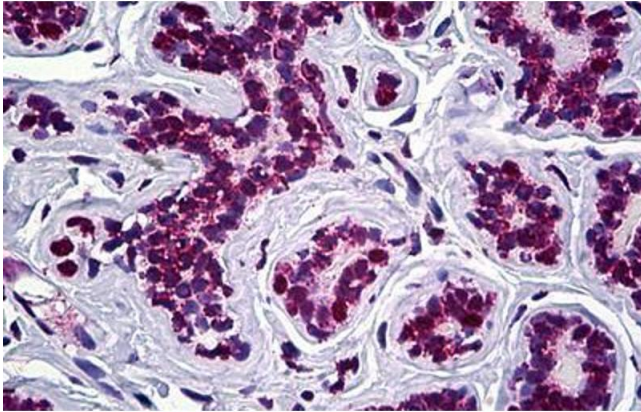
Target:	STAG2
Alternative Name:	STAG2 (STAG2 Products)
Background:	Name/Gene ID: STAG2 Synonyms: STAG2, Cohesin subunit SA-2, SCC3B, SCC3 homolog 2, Stromal antigen 2, SA2, BA51701.1, SA-2
Gene ID:	10735
NCBI Accession:	NP_006594
UniProt:	Q8N3U4
Pathways:	Stem Cell Maintenance

Application Details

Application Notes:	Approved: ELISA, IF (10 µg/mL), IHC, IHC-P (5 µg/mL), WB Usage: Immunohistochemistry: Formalin-fixed paraffin-embedded sections. Western Blot: Cell lysate, Cell lysate, Recombinant protein.
Comment:	Target Species of Antibody: Human
Restrictions:	For Research Use only

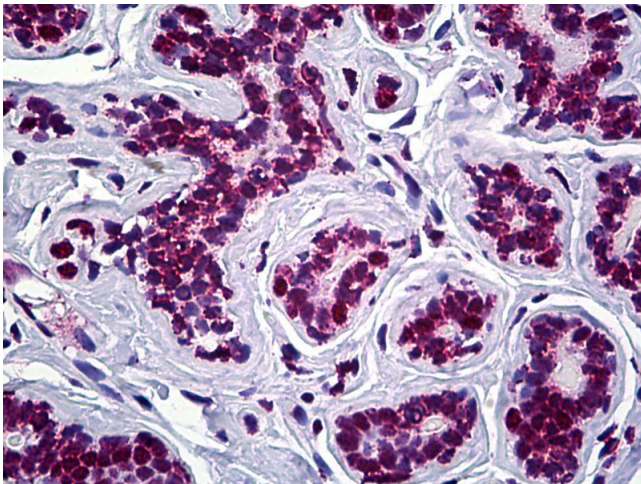
Handling

Format:	Liquid
Concentration:	Lot specific
Buffer:	PBS, pH 7.4.
Handling Advice:	avoid freeze thaw cycles.
Storage:	4 °C, -20 °C
Storage Comment:	Short term 4°C, long term aliquot and store at -20°C, avoid freeze-thaw cycles.



Immunohistochemistry (Formalin-fixed Paraffin-embedded Sections)

Image 1. Human Breast: Formalin-Fixed, Paraffin-Embedded (FFPE)



Immunohistochemistry

Image 2. Anti-STAG2 antibody IHC of human breast. Immunohistochemistry of formalin-fixed, paraffin-embedded tissue after heat-induced antigen retrieval. Antibody concentration 5 ug/ml.