



[Go to Product page](#)

Datasheet for ABIN6260879  
**anti-Claudin 12 antibody (C-Term)**

1 Image

Overview

Quantity:	100 µL
Target:	Claudin 12 (CLDN12)
Binding Specificity:	C-Term
Reactivity:	Human, Mouse
Host:	Rabbit
Clonality:	Polyclonal
Conjugate:	This Claudin 12 antibody is un-conjugated
Application:	ELISA, Western Blotting (WB)

Product Details

Immunogen:	A synthesized peptide derived from human Claudin 12, corresponding to a region within C-terminal amino acids.
Isotype:	IgG
Specificity:	Claudin 12 Antibody detects endogenous levels of total Claudin 12.
Predicted Reactivity:	Pig,Bovine,Horse,Sheep,Rabbit,Dog,Chicken,Xenopus
Purification:	The antiserum was purified by peptide affinity chromatography using SulfoLink™ Coupling Resin (Thermo Fisher Scientific).

Target Details

Target:	Claudin 12 (CLDN12)
---------	---------------------

## Target Details

---

Alternative Name:	CLDN12 ( <a href="#">CLDN12 Products</a> )
Background:	Description: Plays a major role in tight junction-specific obliteration of the intercellular space, through calcium-independent cell-adhesion activity. Gene: CLDN12
Molecular Weight:	27 kDa
Gene ID:	9069
UniProt:	<a href="#">P56749</a>
Pathways:	<a href="#">Cell-Cell Junction Organization</a>

## Application Details

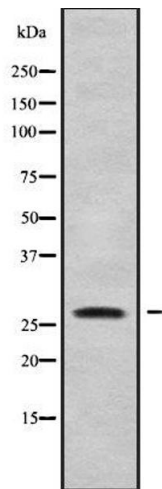
---

Application Notes:	WB 1:1000-3000, ELISA(peptide) 1:20000-1:40000
Restrictions:	For Research Use only

## Handling

---

Format:	Liquid
Concentration:	1 mg/mL
Buffer:	Rabbit IgG in phosphate buffered saline , pH 7.4, 150 mM NaCl, 0.02 % sodium azide and 50 % glycerol.
Preservative:	Sodium azide
Precaution of Use:	This product contains Sodium azide: a POISONOUS AND HAZARDOUS SUBSTANCE which should be handled by trained staff only.
Storage:	-20 °C
Storage Comment:	Store at -20 °C. Stable for 12 months from date of receipt.
Expiry Date:	12 months



### Western Blotting

**Image 1.** Western blot analysis of CLDN12 using K562 whole cell lysates