



[Go to Product page](#)

Datasheet for ABIN6260880  
**anti-CLDN14 antibody (C-Term)**

2 Images

Overview

Quantity:	100 µL
Target:	CLDN14
Binding Specificity:	C-Term
Reactivity:	Human, Mouse, Rat
Host:	Rabbit
Clonality:	Polyclonal
Conjugate:	This CLDN14 antibody is un-conjugated
Application:	Western Blotting (WB), ELISA, Immunohistochemistry (IHC)

Product Details

Immunogen:	A synthesized peptide derived from human Claudin 14, corresponding to a region within C-terminal amino acids.
Isotype:	IgG
Specificity:	Claudin 14 Antibody detects endogenous levels of total Claudin 14.
Predicted Reactivity:	Pig,Bovine,Horse,Rabbit,Dog,Chicken
Purification:	The antiserum was purified by peptide affinity chromatography using SulfoLink™ Coupling Resin (Thermo Fisher Scientific).

Target Details

Target:	CLDN14
---------	--------

## Target Details

---

Alternative Name:	CLDN14 ( <a href="#">CLDN14 Products</a> )
Background:	Description: Plays a major role in tight junction-specific obliteration of the intercellular space, through calcium-independent cell-adhesion activity. Gene: CLDN14
Molecular Weight:	26 kDa
Gene ID:	23562
UniProt:	<a href="#">O95500</a>
Pathways:	<a href="#">Cell-Cell Junction Organization</a> , <a href="#">Hepatitis C</a>

## Application Details

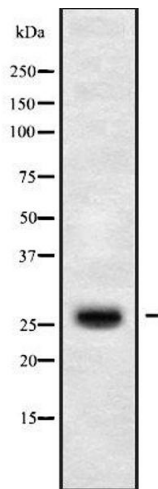
---

Application Notes:	WB 1:1000-3000, IHC 1:200, ELISA(peptide) 1:20000-1:40000
Restrictions:	For Research Use only

## Handling

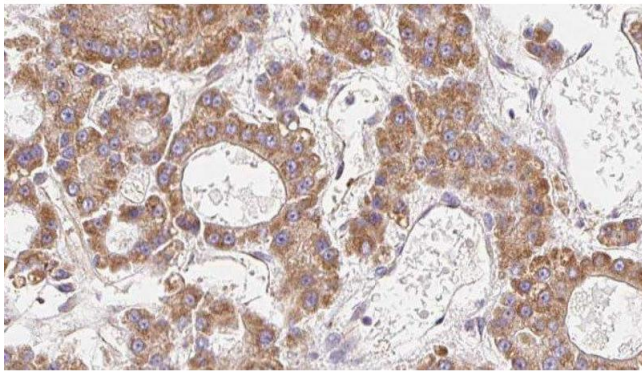
---

Format:	Liquid
Concentration:	1 mg/mL
Buffer:	Rabbit IgG in phosphate buffered saline , pH 7.4, 150 mM NaCl, 0.02 % sodium azide and 50 % glycerol.
Preservative:	Sodium azide
Precaution of Use:	This product contains Sodium azide: a POISONOUS AND HAZARDOUS SUBSTANCE which should be handled by trained staff only.
Storage:	-20 °C
Storage Comment:	Store at -20 °C. Stable for 12 months from date of receipt.
Expiry Date:	12 months



### Western Blotting

**Image 1.** Western blot analysis of CLDN14 using HuvEc whole cell lysates



### Immunohistochemistry

**Image 2.** ABIN6279304 at 1/100 staining Human liver cancer tissue by IHC-P. The sample was formaldehyde fixed and a heat mediated antigen retrieval step in citrate buffer was performed. The sample was then blocked and incubated with the antibody for 1.5 hours at 22°C. An HRP conjugated goat anti-rabbit antibody was used as the secondary