

Datasheet for ABIN6260891

**anti-C-Type Lectin Domain Family 6, Member A (CLEC6A)
(Internal Region) antibody**[Go to Product page](#)**2** Images

Overview

Quantity:	100 µL
Target:	C-Type Lectin Domain Family 6, Member A (CLEC6A)
Binding Specificity:	Internal Region
Reactivity:	Human
Host:	Rabbit
Clonality:	Polyclonal
Conjugate:	Un-conjugated
Application:	Western Blotting (WB), ELISA, Immunofluorescence (IF), Immunocytochemistry (ICC)

Product Details

Immunogen:	A synthesized peptide derived from human CLEC6A, corresponding to a region within the internal amino acids.
Isotype:	IgG
Specificity:	CLEC6A Antibody detects endogenous levels of total CLEC6A.
Purification:	The antiserum was purified by peptide affinity chromatography using SulfoLink™ Coupling Resin (Thermo Fisher Scientific).

Target Details

Target:	C-Type Lectin Domain Family 6, Member A (CLEC6A)
Alternative Name:	CLEC6A (CLEC6A Products)

Target Details

Background:	<p>Description: Binds high-mannose carbohydrates in a Ca²⁺-dependent manner. Functional receptor for alpha-mannans on C.albicans hyphae. Plays an important role in the host defense against C.albicans infection by inducing TH17 cell differentiation. Recognizes also, in a mannose-dependent manner, allergens from house dust mite and fungi, by promoting cysteinyl leukotriene production. Recognizes soluble elements from the eggs of Shistosoma mansoni altering adaptive immune responses. Transduces signals through an Fc receptor gamma chain /FCER1G and Syk-CARD9-NF-kappa-B-dependent pathway (By similarity).</p> <p>Gene: CLEC6A</p>
-------------	--

Molecular Weight:	24 kDa
-------------------	--------

Gene ID:	93978
----------	-------

UniProt:	Q6EIG7
----------	------------------------

Application Details

Application Notes:	WB 1:1000-3000, IF/ICC 1:100-1:500, ELISA(peptide) 1:20000-1:40000
--------------------	--

Restrictions:	For Research Use only
---------------	-----------------------

Handling

Format:	Liquid
---------	--------

Concentration:	1 mg/mL
----------------	---------

Buffer:	Rabbit IgG in phosphate buffered saline , pH 7.4, 150 mM NaCl, 0.02 % sodium azide and 50 % glycerol.
---------	---

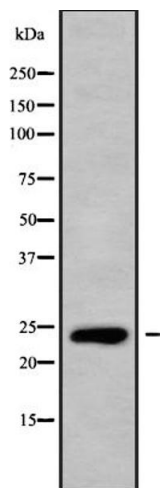
Preservative:	Sodium azide
---------------	--------------

Precaution of Use:	This product contains Sodium azide: a POISONOUS AND HAZARDOUS SUBSTANCE which should be handled by trained staff only.
--------------------	--

Storage:	-20 °C
----------	--------

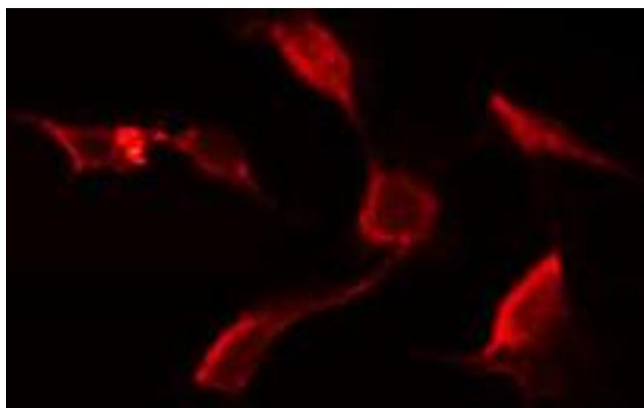
Storage Comment:	Store at -20 °C. Stable for 12 months from date of receipt.
------------------	---

Expiry Date:	12 months
--------------	-----------



Western Blotting

Image 1. Western blot analysis of CLEC6A using HepG2 whole cell lysates



Immunofluorescence (fixed cells)

Image 2. ABIN6272657 staining HeLa by IF/ICC. The sample were fixed with PFA and permeabilized in 0.1% Triton X-100, then blocked in 10% serum for 45 minutes at 25°C. The primary antibody was diluted at 1/200 and incubated with the sample for 1 hour at 37°C. An Alexa Fluor 594 conjugated goat anti-rabbit IgG (H+L) Ab, diluted at 1/600, was used as the secondary antibody.