

Datasheet for ABIN6260904
anti-CMTM4 antibody (N-Term)[Go to Product page](#)

2 Images

Overview

Quantity:	100 µL
Target:	CMTM4
Binding Specificity:	N-Term
Reactivity:	Human
Host:	Rabbit
Clonality:	Polyclonal
Conjugate:	This CMTM4 antibody is un-conjugated
Application:	ELISA, Western Blotting (WB), Immunofluorescence (IF), Immunocytochemistry (ICC)

Product Details

Immunogen:	A synthesized peptide derived from human CMTM4, corresponding to a region within N-terminal amino acids.
Isotype:	IgG
Specificity:	CMTM4 Antibody detects endogenous levels of total CMTM4.
Predicted Reactivity:	Pig,Zebrafish,Bovine,Chicken
Purification:	The antiserum was purified by peptide affinity chromatography using SulfoLink™ Coupling Resin (Thermo Fisher Scientific).

Target Details

Target:	CMTM4
---------	-------

Target Details

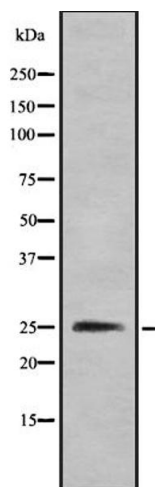
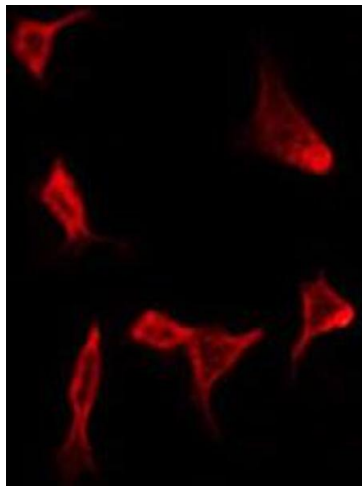
Alternative Name:	CMTM4 (CMTM4 Products)
Background:	<p>Description: Acts as a backup for CMTM6 to regulate plasma membrane expression of PD-L1/CD274, an immune inhibitory ligand critical for immune tolerance to self and antitumor immunity. May protect PD-L1/CD274 from being polyubiquitinated and targeted for degradation.</p> <p>Gene: CMTM4</p>
Molecular Weight:	25kDa
Gene ID:	146223
UniProt:	Q8IZR5

Application Details

Application Notes:	WB 1:1000, IF/ICC 1:100-1:500, ELISA(peptide) 1:20000-1:40000
Restrictions:	For Research Use only

Handling

Format:	Liquid
Concentration:	1 mg/mL
Buffer:	Rabbit IgG in phosphate buffered saline , pH 7.4, 150 mM NaCl, 0.02 % sodium azide and 50 % glycerol.
Preservative:	Sodium azide
Precaution of Use:	This product contains Sodium azide: a POISONOUS AND HAZARDOUS SUBSTANCE which should be handled by trained staff only.
Storage:	-20 °C
Storage Comment:	Store at -20 °C. Stable for 12 months from date of receipt.
Expiry Date:	12 months



Immunofluorescence (fixed cells)

Image 1. ABIN6272275 staining HeLa by IF/ICC. The sample were fixed with PFA and permeabilized in 0.1% Triton X-100, then blocked in 10% serum for 45 minutes at 25°C. The primary antibody was diluted at 1/200 and incubated with the sample for 1 hour at 37°C. An Alexa Fluor 594 conjugated goat anti-rabbit IgG (H+L) Ab, diluted at 1/600, was used as the secondary antibody.

Western Blotting

Image 2. Western blot analysis of CMTM4 using HeLa whole cell lysates