



[Go to Product page](#)

Datasheet for ABIN6260907
anti-CNDP2 antibody (C-Term)

1 Image

Overview

Quantity:	100 µL
Target:	CNDP2
Binding Specificity:	C-Term
Reactivity:	Human, Mouse, Rat
Host:	Rabbit
Clonality:	Polyclonal
Conjugate:	This CNDP2 antibody is un-conjugated
Application:	Western Blotting (WB), ELISA

Product Details

Immunogen:	A synthesized peptide derived from human CNDP2, corresponding to a region within C-terminal amino acids.
Isotype:	IgG
Specificity:	CNDP2 Antibody detects endogenous levels of total CNDP2.
Predicted Reactivity:	Pig,Zebrafish,Bovine,Horse,Sheep,Rabbit,Dog,Chicken,Xenopus
Purification:	The antiserum was purified by peptide affinity chromatography using SulfoLink™ Coupling Resin (Thermo Fisher Scientific).

Target Details

Target:	CNDP2
---------	-------

Target Details

Alternative Name: CNDP2 ([CNDP2 Products](#))

Background: Description: Hydrolyzes a variety of dipeptides including L-carnosine but has a strong preference for Cys-Gly (PubMed:19346245). Acts as a functional tumor suppressor in gastric cancer via activation of the mitogen-activated protein kinase (MAPK) pathway. An elevated level of CNDP2 activates the p38 and JNK MAPK pathways to induce cell apoptosis, and a lower level of CNDP2 activates the ERK MAPK pathway to promote cell proliferation (PubMed:24395568). Isoform 2 may play a role as tumor suppressor in hepatocellular carcinoma (HCC) cells (PubMed:17121880). Catalyzes the production of N-lactoyl-amino acids from lactate and amino acids by reverse proteolysis (PubMed:25964343).
Gene: CNDP2

Molecular Weight: 53kDa

Gene ID: 55748

UniProt: [Q96KP4](#)

Application Details

Application Notes: WB 1:1000-3000, ELISA(peptide) 1:20000-1:40000

Restrictions: For Research Use only

Handling

Format: Liquid

Concentration: 1 mg/mL

Buffer: Rabbit IgG in phosphate buffered saline , pH 7.4, 150 mM NaCl, 0.02 % sodium azide and 50 % glycerol.

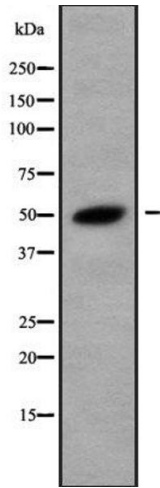
Preservative: Sodium azide

Precaution of Use: This product contains Sodium azide: a POISONOUS AND HAZARDOUS SUBSTANCE which should be handled by trained staff only.

Storage: -20 °C

Storage Comment: Store at -20 °C. Stable for 12 months from date of receipt.

Expiry Date: 12 months



Western Blotting

Image 1. Western blot analysis of CNDP2 using K562 whole cell lysates