



[Go to Product page](#)

Datasheet for ABIN6260910  
**anti-CNN1 antibody (N-Term)**

1 Image

### Overview

Quantity:	100 µL
Target:	CNN1
Binding Specificity:	N-Term
Reactivity:	Human, Mouse
Host:	Rabbit
Clonality:	Polyclonal
Conjugate:	This CNN1 antibody is un-conjugated
Application:	Immunohistochemistry (IHC), Western Blotting (WB), ELISA

### Product Details

Immunogen:	A synthesized peptide derived from human Calponin, corresponding to a region within N-terminal amino acids.
Isotype:	IgG
Specificity:	Calponin Antibody detects endogenous levels of total Calponin.
Predicted Reactivity:	Pig,Bovine,Horse,Sheep,Dog,Chicken,Xenopus
Purification:	The antiserum was purified by peptide affinity chromatography using SulfoLink™ Coupling Resin (Thermo Fisher Scientific).

### Target Details

Target:	CNN1
---------	------

## Target Details

---

Alternative Name:	CNN1 ( <a href="#">CNN1 Products</a> )
Background:	Description: Thin filament-associated protein that is implicated in the regulation and modulation of smooth muscle contraction. It is capable of binding to actin, calmodulin, troponin C and tropomyosin. The interaction of calponin with actin inhibits the actomyosin Mg-ATPase activity (By similarity). Gene: CNN1
Molecular Weight:	34 kDa
Gene ID:	1264
UniProt:	<a href="#">P51911</a>

## Application Details

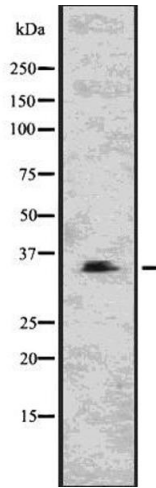
---

Application Notes:	WB 1:1000-3000, IHC 1:50-1:200, ELISA(peptide) 1:20000-1:40000
Restrictions:	For Research Use only

## Handling

---

Format:	Liquid
Concentration:	1 mg/mL
Buffer:	Rabbit IgG in phosphate buffered saline , pH 7.4, 150 mM NaCl, 0.02 % sodium azide and 50 % glycerol.
Preservative:	Sodium azide
Precaution of Use:	This product contains Sodium azide: a POISONOUS AND HAZARDOUS SUBSTANCE which should be handled by trained staff only.
Storage:	-20 °C
Storage Comment:	Store at -20 °C. Stable for 12 months from date of receipt.
Expiry Date:	12 months



### Western Blotting

**Image 1.** Western blot analysis of CNN1 using NIH-3T3 whole lysates.