

Datasheet for ABIN6260919

anti-CNTF Receptor alpha antibody (Internal Region)**2** Images[Go to Product page](#)

Overview

| | |
|----------------------|--|
| Quantity: | 100 µL |
| Target: | CNTF Receptor alpha (CNTFR) |
| Binding Specificity: | Internal Region |
| Reactivity: | Human, Mouse, Rat |
| Host: | Rabbit |
| Clonality: | Polyclonal |
| Conjugate: | This CNTF Receptor alpha antibody is un-conjugated |
| Application: | Western Blotting (WB), ELISA, Immunohistochemistry (IHC) |

Product Details

| | |
|-----------------------|---|
| Immunogen: | A synthesized peptide derived from human CNTFR, corresponding to a region within the internal amino acids. |
| Isotype: | IgG |
| Specificity: | CNTFR Antibody detects endogenous levels of total CNTFR. |
| Predicted Reactivity: | Pig,Zebrafish,Bovine,Horse,Sheep,Rabbit,Dog,Chicken |
| Purification: | The antiserum was purified by peptide affinity chromatography using SulfoLink™ Coupling Resin (Thermo Fisher Scientific). |

Target Details

| | |
|---------|-----------------------------|
| Target: | CNTF Receptor alpha (CNTFR) |
|---------|-----------------------------|

Target Details

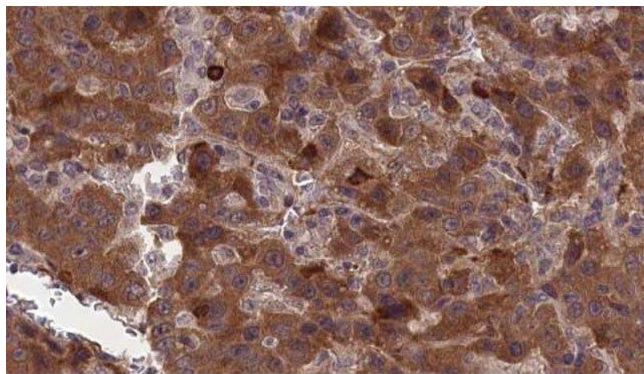
| | |
|-------------------|---|
| Alternative Name: | CNTFR (CNTFR Products) |
| Background: | Description: Binds to CNTF. The alpha subunit provides the receptor specificity. Gene: CNTFR |
| Molecular Weight: | 41kDa |
| Gene ID: | 1271 |
| UniProt: | P26992 |
| Pathways: | JAK-STAT Signaling , Feeding Behaviour |

Application Details

| | |
|--------------------|---|
| Application Notes: | WB 1:500-1:2000, IHC 1:50-1:100, ELISA(peptide) 1:20000-1:40000 |
| Restrictions: | For Research Use only |

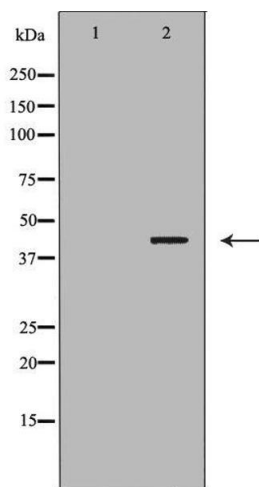
Handling

| | |
|--------------------|--|
| Format: | Liquid |
| Concentration: | 1 mg/mL |
| Buffer: | Rabbit IgG in phosphate buffered saline , pH 7.4, 150 mM NaCl, 0.02 % sodium azide and 50 % glycerol. |
| Preservative: | Sodium azide |
| Precaution of Use: | This product contains Sodium azide: a POISONOUS AND HAZARDOUS SUBSTANCE which should be handled by trained staff only. |
| Storage: | -20 °C |
| Storage Comment: | Store at -20 °C. Stable for 12 months from date of receipt. |
| Expiry Date: | 12 months |



Immunohistochemistry

Image 1. ABIN6277317 at 1/100 staining Human liver cancer tissue by IHC-P. The sample was formaldehyde fixed and a heat mediated antigen retrieval step in citrate buffer was performed. The sample was then blocked and incubated with the antibody for 1.5 hours at 22°C. An HRP conjugated goat anti-rabbit antibody was used as the secondary



Western Blotting

Image 2. Western blot analysis of extracts of mouse heart tissue lysate, using CNTFR antibody. The lane on the left is treated with the antigen-specific peptide.