

Datasheet for ABIN6260922

**anti-CNTNAP3 antibody (Internal Region)****3** Images[Go to Product page](#)

## Overview

Quantity:	100 µL
Target:	CNTNAP3
Binding Specificity:	Internal Region
Reactivity:	Human
Host:	Rabbit
Clonality:	Polyclonal
Conjugate:	This CNTNAP3 antibody is un-conjugated
Application:	ELISA, Immunohistochemistry (IHC), Western Blotting (WB)

## Product Details

Immunogen:	A synthesized peptide derived from human CNTNAP3, corresponding to a region within the internal amino acids.
Isotype:	IgG
Specificity:	CNTNAP3 Antibody detects endogenous levels of total CNTNAP3.
Purification:	The antiserum was purified by peptide affinity chromatography using SulfoLink™ Coupling Resin (Thermo Fisher Scientific).

## Target Details

Target:	CNTNAP3
Alternative Name:	CNTNAP3 ( <a href="#">CNTNAP3 Products</a> )

## Target Details

Background:	Gene: CNTNAP3
-------------	---------------

Molecular Weight:	141kDa
-------------------	--------

Gene ID:	79937
----------	-------

UniProt:	<a href="#">Q9BZ76</a>
----------	------------------------

## Application Details

Application Notes:	WB 1:1000-3000, IHC 1:200, ELISA(peptide) 1:20000-1:40000
--------------------	---

Restrictions:	For Research Use only
---------------	-----------------------

## Handling

Format:	Liquid
---------	--------

Concentration:	1 mg/mL
----------------	---------

Buffer:	Rabbit IgG in phosphate buffered saline , pH 7.4, 150 mM NaCl, 0.02 % sodium azide and 50 % glycerol.
---------	---

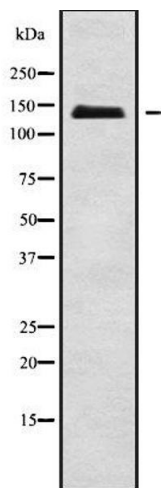
Preservative:	Sodium azide
---------------	--------------

Precaution of Use:	This product contains Sodium azide: a POISONOUS AND HAZARDOUS SUBSTANCE which should be handled by trained staff only.
--------------------	--

Storage:	-20 °C
----------	--------

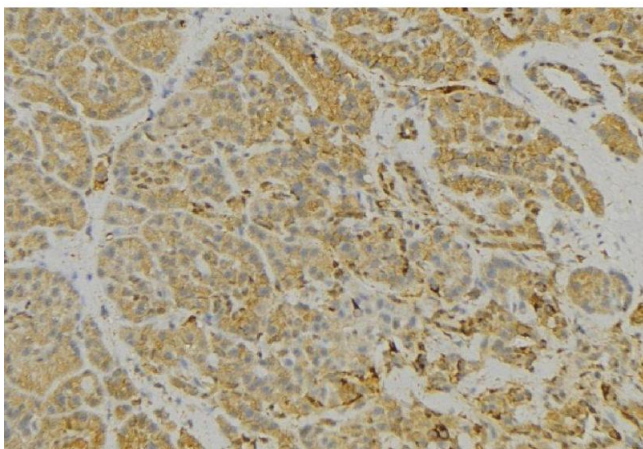
Storage Comment:	Store at -20 °C. Stable for 12 months from date of receipt.
------------------	---

Expiry Date:	12 months
--------------	-----------



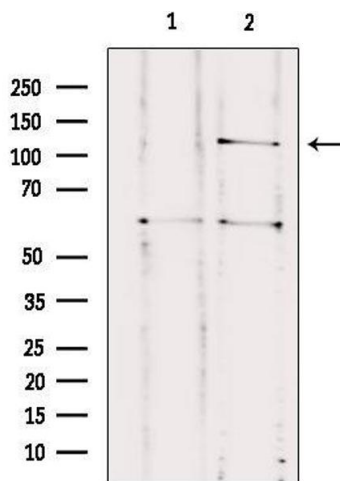
### Western Blotting

**Image 1.** Western blot analysis of CNTNAP3 using A549 whole cell lysates



### Immunohistochemistry

**Image 2.** ABIN6279328 at 1/100 staining Human pancreas tissue by IHC-P. The sample was formaldehyde fixed and a heat mediated antigen retrieval step in citrate buffer was performed. The sample was then blocked and incubated with the antibody for 1.5 hours at 22°C. An HRP conjugated goat anti-rabbit antibody was used as the secondary



### Western Blotting

**Image 3.** Western blot analysis of extracts from HUVEC, using CNTNAP3 Antibody. Lane 1 was treated with the blocking peptide.