

Datasheet for ABIN6260931  
**anti-COL19A1 antibody**

## 2 Images

[Go to Product page](#)

## Overview

Quantity:	100 µL
Target:	COL19A1
Reactivity:	Human, Rat
Host:	Rabbit
Clonality:	Polyclonal
Conjugate:	This COL19A1 antibody is un-conjugated
Application:	Western Blotting (WB), ELISA, Immunohistochemistry (IHC)

## Product Details

Immunogen:	A synthesized peptide derived from human COL19A1
Isotype:	IgG
Specificity:	COL19A1 Antibody detects endogenous levels of total COL19A1
Cross-Reactivity:	Human, Rat (Rattus)
Purification:	The antiserum was purified by peptide affinity chromatography using SulfoLink™ Coupling Resin (Thermo Fisher Scientific).

## Target Details

Target:	COL19A1
Alternative Name:	COL19A1 ( <a href="#">COL19A1 Products</a> )
Background:	Description: May act as a cross-bridge between fibrils and other extracellular matrix molecules.

## Target Details

Involved in skeletal myogenesis in the developing esophagus. May play a role in organization of the pericellular matrix or the sphinteric smooth muscle.

Gene: COL19A1

Molecular Weight: 120kDa

Gene ID: 1310

UniProt: [Q14993](#)

## Application Details

Application Notes: WB 1:1000 IHC 1:200

Restrictions: For Research Use only

## Handling

Format: Liquid

Concentration: 1 mg/mL

Buffer: Rabbit IgG in phosphate buffered saline , pH 7.4, 150 mM NaCl, 0.02 % sodium azide and 50 % glycerol.

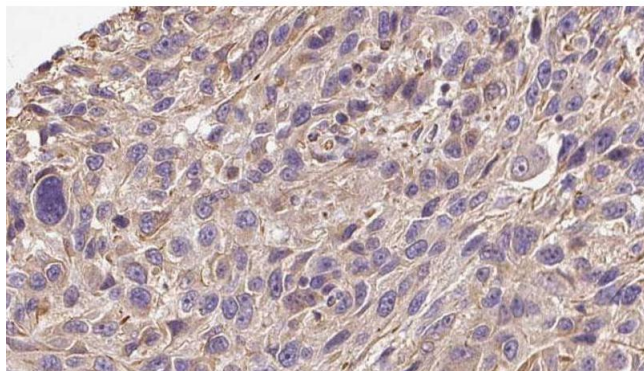
Preservative: Sodium azide

Precaution of Use: This product contains Sodium azide: a POISONOUS AND HAZARDOUS SUBSTANCE which should be handled by trained staff only.

Storage: -20 °C

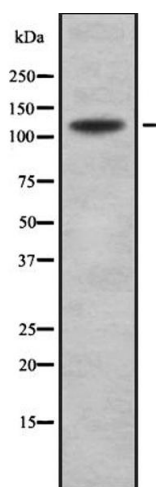
Storage Comment: Store at -20 °C.Stable for 12 months from date of receipt

Expiry Date: 12 months



### Immunohistochemistry

**Image 1.** ABIN6272277 at 1/100 staining Human Melanoma tissue by IHC-P. The sample was formaldehyde fixed and a heat mediated antigen retrieval step in citrate buffer was performed. The sample was then blocked and incubated with the antibody for 1.5 hours at 22°C. An HRP conjugated goat anti-rabbit antibody was used as the secondary.



### Western Blotting

**Image 2.** Western blot analysis of COL19A1 using K562 whole cell lysates