



[Go to Product page](#)

Datasheet for ABIN6260932

anti-COL4a6 antibody (Internal Region)

2 Images

Overview

Quantity:	100 µL
Target:	COL4a6
Binding Specificity:	Internal Region
Reactivity:	Human, Rat, Mouse
Host:	Rabbit
Clonality:	Polyclonal
Conjugate:	This COL4a6 antibody is un-conjugated
Application:	Western Blotting (WB), ELISA, Immunohistochemistry (IHC)

Product Details

Immunogen:	A synthesized peptide derived from human COL4A6, corresponding to a region within the internal amino acids.
Isotype:	IgG
Specificity:	COL4A6 Antibody detects endogenous levels of total COL4A6.
Predicted Reactivity:	Bovine, Sheep, Dog
Purification:	The antiserum was purified by peptide affinity chromatography using SulfoLink™ Coupling Resin (Thermo Fisher Scientific).

Target Details

Target:	COL4a6
---------	--------

Target Details

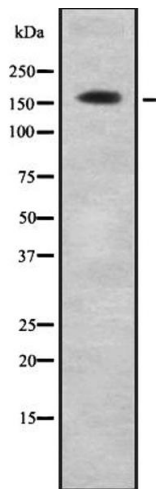
Alternative Name:	COL4A6 (COL4a6 Products)
Background:	Description: Type IV collagen is the major structural component of glomerular basement membranes (GBM), forming a 'chicken-wire' meshwork together with laminins, proteoglycans and entactin/nidogen. Gene: COL4A6
Molecular Weight:	160kDa
Gene ID:	1288
UniProt:	Q14031

Application Details

Application Notes:	WB 1:1000, IHC 1:200, ELISA(peptide) 1:20000-1:40000
Restrictions:	For Research Use only

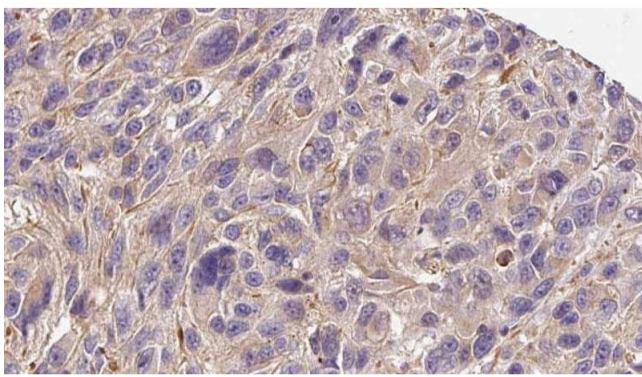
Handling

Format:	Liquid
Concentration:	1 mg/mL
Buffer:	Rabbit IgG in phosphate buffered saline , pH 7.4, 150 mM NaCl, 0.02 % sodium azide and 50 % glycerol.
Preservative:	Sodium azide
Precaution of Use:	This product contains Sodium azide: a POISONOUS AND HAZARDOUS SUBSTANCE which should be handled by trained staff only.
Storage:	-20 °C
Storage Comment:	Store at -20 °C. Stable for 12 months from date of receipt.
Expiry Date:	12 months



Western Blotting

Image 1. Western blot analysis of COL4A6 using K562 whole cell lysates



Immunohistochemistry

Image 2. ABIN6272278 at 1/100 staining Human Melanoma tissue by IHC-P. The sample was formaldehyde fixed and a heat mediated antigen retrieval step in citrate buffer was performed. The sample was then blocked and incubated with the antibody for 1.5 hours at 22°C. An HRP conjugated goat anti-rabbit antibody was used as the secondary.