

Datasheet for ABIN6260934  
**anti-COLEC11 antibody (C-Term)**



[Go to Product page](#)

2 Images

## Overview

Quantity:	100 µL
Target:	COLEC11
Binding Specificity:	C-Term
Reactivity:	Human, Mouse, Rat, Zebrafish (Danio rerio)
Host:	Rabbit
Clonality:	Polyclonal
Conjugate:	This COLEC11 antibody is un-conjugated
Application:	Western Blotting (WB), Immunohistochemistry (IHC)

## Product Details

Immunogen:	A synthesized peptide derived from human COLEC11, corresponding to a region within C-terminal amino acids.
Isotype:	IgG
Specificity:	COLEC11 Antibody detects endogenous levels of total COLEC11.
Predicted Reactivity:	Pig,Zebrafish,Bovine,Horse,Sheep,Rabbit,Chicken,Xenopus
Purification:	The antiserum was purified by peptide affinity chromatography using SulfoLink™ Coupling Resin (Thermo Fisher Scientific).

## Target Details

Target:	COLEC11
---------	---------

## Target Details

---

Alternative Name:	COLEC11 ( <a href="#">COLEC11 Products</a> )
Background:	Description: Lectin that binds to various sugars including fucose and mannose. Has a higher affinity for fucose compared to mannose. Does not bind to glucose, N-acetylglucosamine and N-acetylgalactosamine. Also binds lipopolysaccharides (LPS). Involved in fundamental development serving as a guidance cue for neural crest cell migration (By similarity). Gene: COLEC11
Molecular Weight:	34 kDa
Gene ID:	78989
UniProt:	<a href="#">Q9BWP8</a>

## Application Details

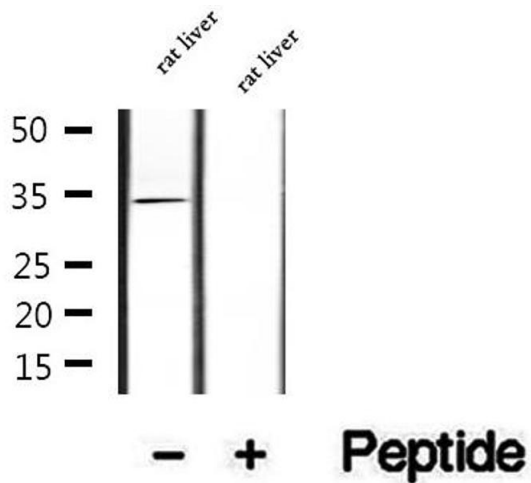
---

Application Notes:	WB 1:500-1:2000, IHC 1:50-1:200
Restrictions:	For Research Use only

## Handling

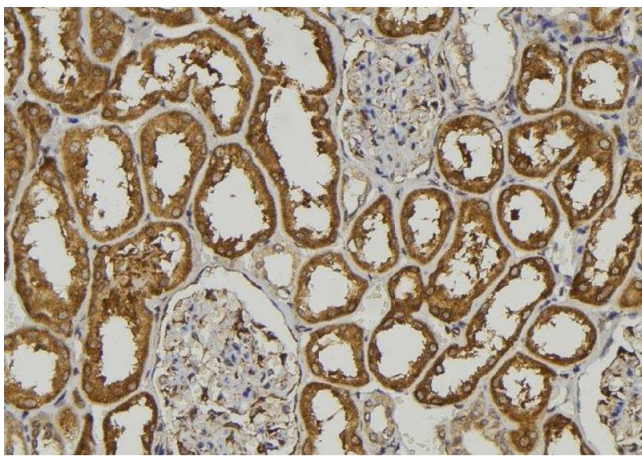
---

Format:	Liquid
Concentration:	1 mg/mL
Buffer:	Rabbit IgG in phosphate buffered saline , pH 7.4, 150 mM NaCl, 0.02 % sodium azide and 50 % glycerol.
Preservative:	Sodium azide
Precaution of Use:	This product contains Sodium azide: a POISONOUS AND HAZARDOUS SUBSTANCE which should be handled by trained staff only.
Storage:	-20 °C
Storage Comment:	Store at -20 °C. Stable for 12 months from date of receipt.
Expiry Date:	12 months



### Western Blotting

**Image 1.** Western blot analysis of extracts of rat liver tissue, using COLEC11 antibody.



### Immunohistochemistry

**Image 2.** ABIN6273212 at 1/100 staining Human kidney tissue by IHC-P. The sample was formaldehyde fixed and a heat mediated antigen retrieval step in citrate buffer was performed. The sample was then blocked and incubated with the antibody for 1.5 hours at 22°C. An HRP conjugated goat anti-rabbit antibody was used as the secondary