



[Go to Product page](#)

Datasheet for ABIN6260948  
**anti-COL5A1 antibody (N-Term)**

4 Images

Overview

Quantity:	100 µL
Target:	COL5A1
Binding Specificity:	N-Term
Reactivity:	Human
Host:	Rabbit
Clonality:	Polyclonal
Conjugate:	This COL5A1 antibody is un-conjugated
Application:	Western Blotting (WB), Immunohistochemistry (IHC), ELISA, Immunofluorescence (IF), Immunocytochemistry (ICC)

Product Details

Immunogen:	A synthesized peptide derived from human Collagen V alpha 1, corresponding to a region within N-terminal amino acids.
Isotype:	IgG
Specificity:	Collagen V alpha 1 Antibody detects endogenous levels of total Collagen V alpha 1.
Predicted Reactivity:	Pig,Horse,Sheep
Purification:	The antiserum was purified by peptide affinity chromatography using SulfoLink™ Coupling Resin (Thermo Fisher Scientific).

Target Details

Target:	COL5A1
---------	--------

## Target Details

---

Alternative Name:	COL5A1 ( <a href="#">COL5A1 Products</a> )
Background:	Description: Type V collagen is a member of group I collagen (fibrillar forming collagen). It is a minor connective tissue component of nearly ubiquitous distribution. Type V collagen binds to DNA, heparan sulfate, thrombospondin, heparin, and insulin. Gene: COL5A1
Molecular Weight:	200kDa
Gene ID:	1289
UniProt:	<a href="#">P20908</a>
Pathways:	<a href="#">Growth Factor Binding</a>

## Application Details

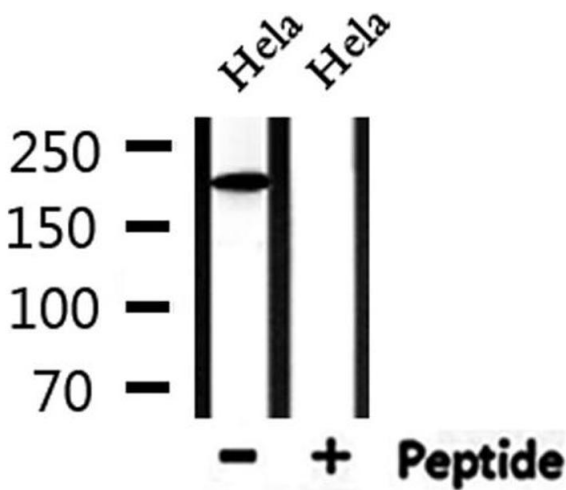
---

Application Notes:	WB 1:500-1:2000, IHC 1:50-1:200, IF/ICC 1:100-1:500, ELISA(peptide) 1:20000-1:40000
Restrictions:	For Research Use only

## Handling

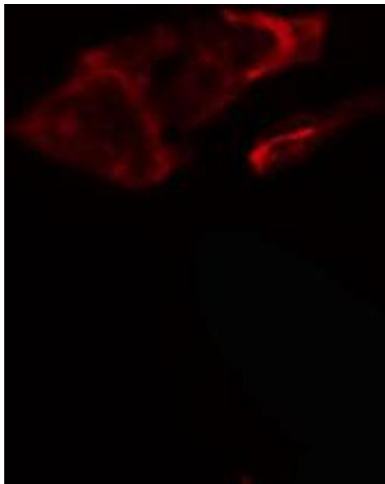
---

Format:	Liquid
Concentration:	1 mg/mL
Buffer:	Rabbit IgG in phosphate buffered saline , pH 7.4, 150 mM NaCl, 0.02 % sodium azide and 50 % glycerol.
Preservative:	Sodium azide
Precaution of Use:	This product contains Sodium azide: a POISONOUS AND HAZARDOUS SUBSTANCE which should be handled by trained staff only.
Storage:	-20 °C
Storage Comment:	Store at -20 °C. Stable for 12 months from date of receipt.
Expiry Date:	12 months



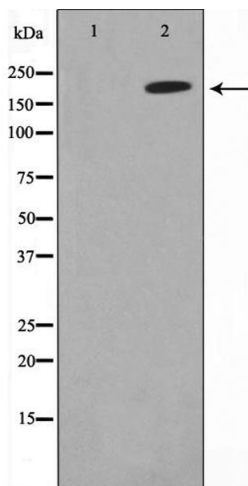
### Western Blotting

**Image 1.** Western blot analysis of extracts from HeLa, using Collagen Valpha 1 Antibody.



### Immunofluorescence (fixed cells)

**Image 2.** ABIN6266880 staining HeLa cells by IF/ICC. The sample were fixed with PFA and permeabilized in 0.1% Triton X-100, then blocked in 10% serum for 45 minutes at 25°C. The primary antibody was diluted at 1/200 and incubated with the sample for 1 hour at 37°C. An Alexa Fluor 594 conjugated goat anti-rabbit IgG (H+L) antibody (Cat.# S0006), diluted at 1/600, was used as secondary antibody.



### Western Blotting

**Image 3.** Western blot analysis on HeLa cell lysate using Collagen Valpha 1 Antibody, The lane on the left is treated with the antigen-specific peptide.

Please check the [product details page](#) for more images. Overall 4 images are available for ABIN6260948.