

Datasheet for ABIN6260952

**anti-COL11A1 antibody (Internal Region)****3** Images[Go to Product page](#)

## Overview

Quantity:	100 µL
Target:	COL11A1
Binding Specificity:	Internal Region
Reactivity:	Human, Mouse
Host:	Rabbit
Clonality:	Polyclonal
Conjugate:	This COL11A1 antibody is un-conjugated
Application:	ELISA, Western Blotting (WB), Immunofluorescence (IF), Immunocytochemistry (ICC)

## Product Details

Immunogen:	A synthesized peptide derived from human Collagen XI alpha 1, corresponding to a region within the internal amino acids.
Isotype:	IgG
Specificity:	Collagen XI alpha 1 Antibody detects endogenous levels of total Collagen XI alpha 1.
Predicted Reactivity:	Pig,Bovine,Horse,Sheep,Rabbit,Dog
Purification:	The antiserum was purified by peptide affinity chromatography using SulfoLink™ Coupling Resin (Thermo Fisher Scientific).

## Target Details

Target:	COL11A1
---------	---------

## Target Details

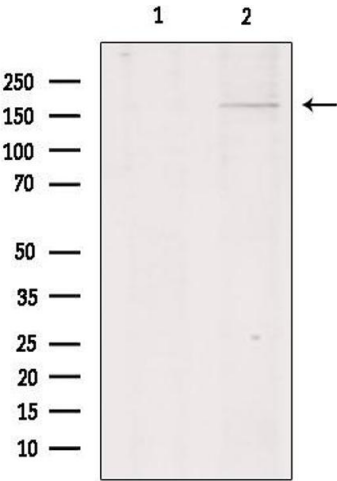
Alternative Name:	COL11A1 ( <a href="#">COL11A1 Products</a> )
Background:	Description: May play an important role in fibrillogenesis by controlling lateral growth of collagen II fibrils. Gene: COL11A1
Molecular Weight:	181kDa
Gene ID:	1301
UniProt:	<a href="#">P12107</a>
Pathways:	<a href="#">Sensory Perception of Sound</a>

## Application Details

Application Notes:	WB 1:500-1:2000, IF/ICC 1:100-1:500, ELISA(peptide) 1:20000-1:40000
Restrictions:	For Research Use only

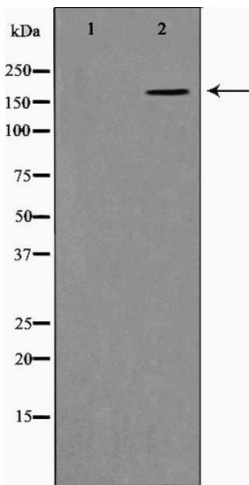
## Handling

Format:	Liquid
Concentration:	1 mg/mL
Buffer:	Rabbit IgG in phosphate buffered saline , pH 7.4, 150 mM NaCl, 0.02 % sodium azide and 50 % glycerol.
Preservative:	Sodium azide
Precaution of Use:	This product contains Sodium azide: a POISONOUS AND HAZARDOUS SUBSTANCE which should be handled by trained staff only.
Storage:	-20 °C
Storage Comment:	Store at -20 °C. Stable for 12 months from date of receipt.
Expiry Date:	12 months



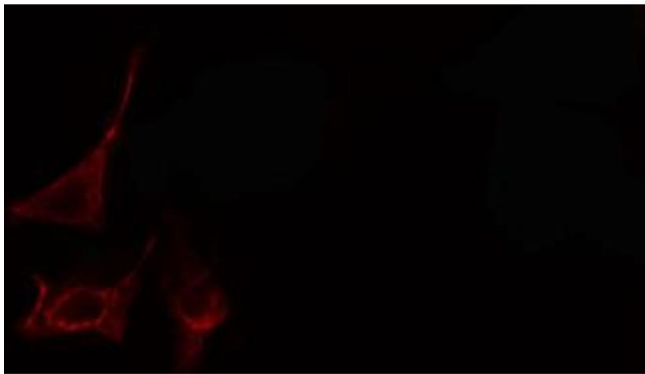
#### Western Blotting

**Image 1.** Western blot analysis of extracts from HepG2, using Collagen XIalpha 1 Antibody. Lane 1 was treated with the blocking peptide.



#### Western Blotting

**Image 2.** Western blot analysis on K562 cell lysate using Collagen XIalpha 1 Antibody, *The lane on the left is treated with the antigen-specific peptide.*



#### Immunofluorescence (fixed cells)

**Image 3.** ABIN6266973 staining HeLa cells by IF/ICC. The sample were fixed with PFA and permeabilized in 0.1% Triton X-100, then blocked in 10% serum for 45 minutes at 25°C. The primary antibody was diluted at 1/200 and incubated with the sample for 1 hour at 37°C. An Alexa Fluor 594 conjugated goat anti-rabbit IgG (H+L) antibody (Cat.# S0006), diluted at 1/600, was used as secondary antibody.