

Datasheet for ABIN6260998
anti-CPA4 antibody (Internal Region)[Go to Product page](#)

2 Images

Overview

Quantity:	100 µL
Target:	CPA4
Binding Specificity:	Internal Region
Reactivity:	Human, Mouse
Host:	Rabbit
Clonality:	Polyclonal
Conjugate:	This CPA4 antibody is un-conjugated
Application:	Western Blotting (WB), ELISA

Product Details

Immunogen:	A synthesized peptide derived from human CPA4, corresponding to a region within the internal amino acids.
Isotype:	IgG
Specificity:	CPA4 Antibody detects endogenous levels of total CPA4.
Predicted Reactivity:	Rabbit
Purification:	The antiserum was purified by peptide affinity chromatography using SulfoLink™ Coupling Resin (Thermo Fisher Scientific).

Target Details

Target:	CPA4
---------	------

Target Details

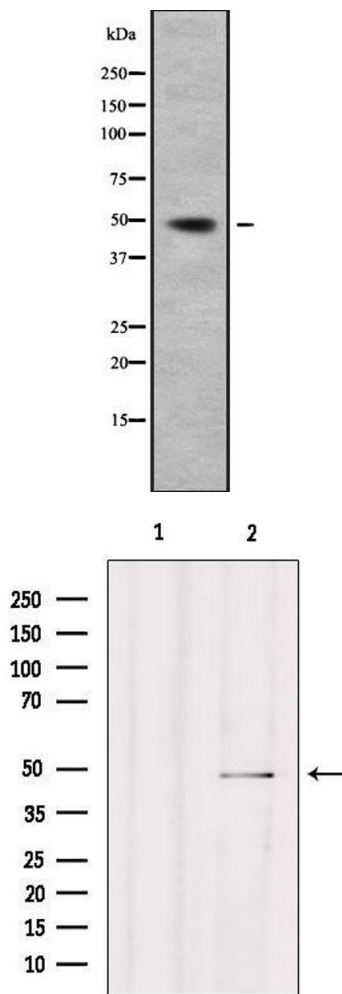
Alternative Name:	CPA4 (CPA4 Products)
Background:	Description: Metalloprotease that could be involved in the histone hyperacetylation pathway (PubMed:10383164). Releases a C-terminal amino acid, with preference for -Phe, -Leu, -Ile, -Met, -Tyr and -Val (PubMed:20385563). Gene: CPA4
Molecular Weight:	47 kDa
Gene ID:	51200
UniProt:	Q9UI42

Application Details

Application Notes:	WB 1:1000-3000, ELISA(peptide) 1:20000-1:40000
Restrictions:	For Research Use only

Handling

Format:	Liquid
Concentration:	1 mg/mL
Buffer:	Rabbit IgG in phosphate buffered saline , pH 7.4, 150 mM NaCl, 0.02 % sodium azide and 50 % glycerol.
Preservative:	Sodium azide
Precaution of Use:	This product contains Sodium azide: a POISONOUS AND HAZARDOUS SUBSTANCE which should be handled by trained staff only.
Storage:	-20 °C
Storage Comment:	Store at -20 °C. Stable for 12 months from date of receipt.
Expiry Date:	12 months



Western Blotting

Image 1. Western blot analysis of CPA4 using 293 whole cell lysates

Western Blotting

Image 2. Western blot analysis of extracts from Hepg2, using CPA4 Antibody. Lane 1 was treated with the blocking peptide.