



[Go to Product page](#)

Datasheet for ABIN6261003

anti-Complexin 1 antibody (N-Term)

3 Images

Overview

Quantity:	100 µL
Target:	Complexin 1 (CPLX1)
Binding Specificity:	N-Term
Reactivity:	Human, Mouse, Rat
Host:	Rabbit
Clonality:	Polyclonal
Conjugate:	This Complexin 1 antibody is un-conjugated
Application:	Western Blotting (WB), Immunohistochemistry (IHC)

Product Details

Immunogen:	A synthesized peptide derived from human CPLX1, corresponding to a region within N-terminal amino acids.
Isotype:	IgG
Specificity:	CPLX1 Antibody detects endogenous levels of total CPLX1.
Predicted Reactivity:	Pig,Bovine,Horse,Sheep,Dog,Chicken,Xenopus
Purification:	The antiserum was purified by peptide affinity chromatography using SulfoLink™ Coupling Resin (Thermo Fisher Scientific).

Target Details

Target:	Complexin 1 (CPLX1)
---------	---------------------

Target Details

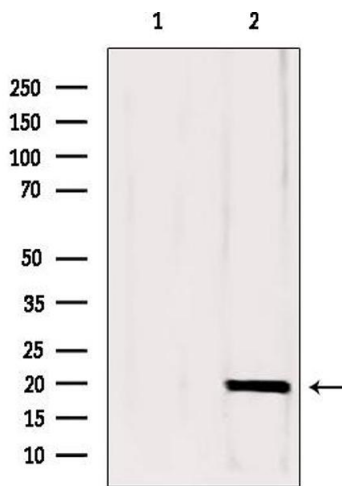
Alternative Name:	CPLX1 (CPLX1 Products)
Background:	<p>Description: Positively regulates a late step in exocytosis of various cytoplasmic vesicles, such as synaptic vesicles and other secretory vesicles (PubMed:21785414). Organizes the SNAREs into a cross-linked zigzag topology that, when interposed between the vesicle and plasma membranes, is incompatible with fusion, thereby preventing SNAREs from releasing neurotransmitters until an action potential arrives at the synapse (PubMed:21785414). Also involved in glucose-induced secretion of insulin by pancreatic beta-cells. Essential for motor behavior.</p> <p>Gene: CPLX1</p>
Molecular Weight:	15-20 kDa
Gene ID:	10815
UniProt:	O14810
Pathways:	Hormone Transport , Synaptic Vesicle Exocytosis , Dicarboxylic Acid Transport

Application Details

Application Notes:	WB 1:500-1:2000, IHC 1:50-1:200
Restrictions:	For Research Use only

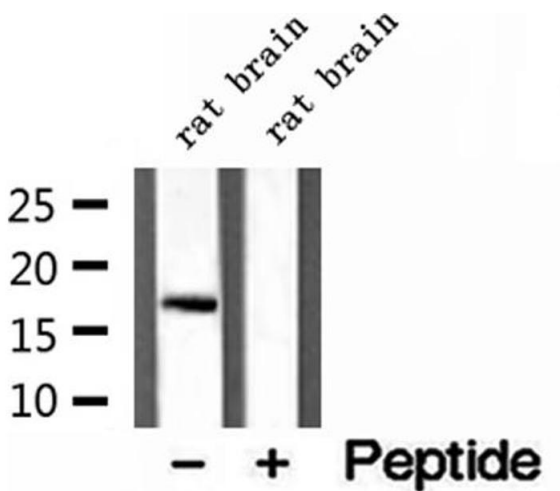
Handling

Format:	Liquid
Concentration:	1 mg/mL
Buffer:	Rabbit IgG in phosphate buffered saline , pH 7.4, 150 mM NaCl, 0.02 % sodium azide and 50 % glycerol.
Preservative:	Sodium azide
Precaution of Use:	This product contains Sodium azide: a POISONOUS AND HAZARDOUS SUBSTANCE which should be handled by trained staff only.
Storage:	-20 °C
Storage Comment:	Store at -20 °C. Stable for 12 months from date of receipt.
Expiry Date:	12 months



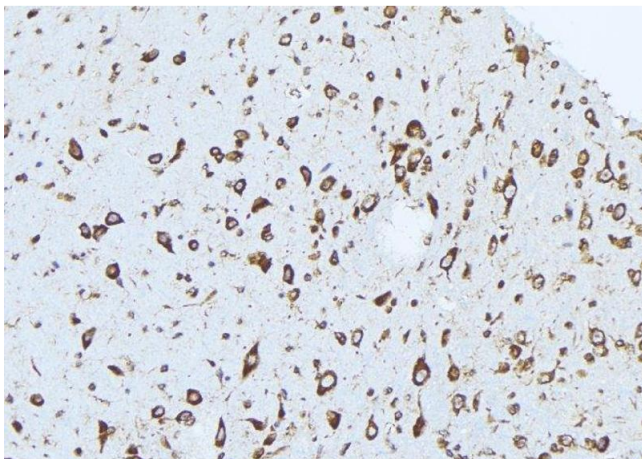
Western Blotting

Image 1. Western blot analysis of extracts from mouse brain, using CPLX1 antibody. Lane 1 was treated with the blocking peptide.



Western Blotting

Image 2. Western blot analysis of extracts of rat brain tissue, using CPLX1 antibody.



Immunohistochemistry

Image 3. ABIN6273036 at 1/100 staining Mouse brain tissue by IHC-P. The sample was formaldehyde fixed and a heat mediated antigen retrieval step in citrate buffer was performed. The sample was then blocked and incubated with the antibody for 1.5 hours at 22°C. An HRP conjugated goat anti-rabbit antibody was used as the secondary